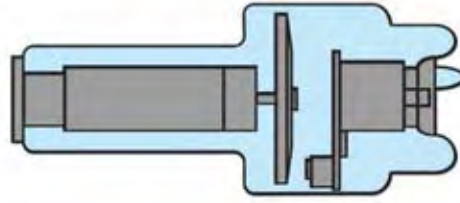


ServiceNet Medical X-Ray



2014

Resources for a Healthy image





contents

radiation protection

2-13

positioning aids

14-19

clinic accessories

20-31

x-ray markers

32-37

darkroom / viewing

38-39

organizing & filing

40-45

workstations

46-48

index inside back cover

- A**
Animal Immobilizers.....17
Animal Transfer Carriers26
Apparel, Lead Protective2-6
Apparel Size Chart10-11
Aprons, Lead Protective4
Apron Disinfectant13
Apron Fabrics13
Apron Racks12
Apron Tote Bag6
- B**
Badge Boards29
Barriers, Mobile Lead.....20-21
Belt6
Blanket, lead.....7
Blockers, lead22
Boxes, storage42
- C**
Cabinets:
 Medical Records40-41
 Stackable40
 X-Ray File.....40-41
Caddies.....44
Caliper29
Carts:
 Cassette/CR-Plate.....43
 Copier38, 43
Cassette/CR:
 Blockers22
 Covers.....25
 Equine25
 Holders24
 Mobile Stand24
CD Mailers45
CD Sleeves.....45
Chart Holder42
Cooling Panels3
Copier, x-ray film38
Covers:
 Cassette/CR-Plate.....25
 Immobilizer16
 Sponge16
CR Plate Holder:
 Equine25
 Lateral.....24
 Mobile.....24
 Table Top29
CR Cart Drapes.....23
- D**
Disinfectant27
Duplicator, x-ray film38
- E**
Equine Cassette/CR Holder25
- F**
Fabric Selection (aprons).....13
Film Jacket.....45
Folders.....45
- G**
Germicide.....27
Glasses, lead protective8-9
Gloves, lead7
- I**
I.D. Printer39
I.D. Printer Cards39
Illuminators.....38
Immobilizers17
Immobilizer Covers.....16
Instrument Stand30
IV Poles31
- K**
Kilt5
- L**
Labels45
Lamp, Exam.....31
Laptop Cart47
Lateral Cassette Holders.....24
Lead Glasses.....8-9
Lead-Lined Table Bin45
Lead Protective Apparel.....4-6
Lead Shield.....20-22
- M**
Mailers45
Markers (32-37):
 Clippers35
 Rulers.....36
 Letter Holders.....37
 Letter Cases.....37
 Letters, Mounted37
 Letters, Unmounted37
 Marker Keeper36
 Pens36
 Personalized, Ident.....34
 Position Indicator32
 Stickers36
 Wafer Thin35
 Wallboard.....33
 Words, single.....33
Marking Pens36
Mayo Stand30
Mittens, lead.....7
Mobile Barriers20-21
Mobile Shields22
Mobile Stand: Cass./CR.....24-25
- N**
Negative Preserver44
- O**
Organizers.....44
- P**
Pet Immobilizers17
Portable Lead Shield20-22
Positioning:
 Sandbags18
 Sponges14-17
- R**
Rack:
 Apron12
 Chart Holder42
 Film Holder24
Ruler36
- S**
Safelights38
Sandbags18
Sandsock19
Shields20-22
Signs28
Size Chart10-11
Skirt5
Sponges14-17
Stand: Instrument.....30
Step Stool.....31
Stools:
 Seated30, 48
 Step31
 Utility.....48
Storage Boxes.....42
- T**
Table Top Image Holder.....24
Transfer Animal Carriers26
Thyroid Collar6
- U**
Utility Cart38
- V**
Veterinary Immobilizers.....17
Vest5
View Boxes.....33
- W**
Wall Mounted Film Holders42
Workstations.....46-47

We've been busy. In order to bring you the *best protective apparel available* we *revamped our patterns and sizing charts* and added a number of new products and enhancements from aprons, vest, and skirts to pediatric protection and an all *new Cooling Panel* to make your job easier and more comfortable. Turn the pages to find out more!



Meet Heather Figlioli, Pattern Specialist from O'More College of Design.



**New Patterns!
New Sizing!
Better Fit!**

Free Stuff on applicable garments:

Shoulder Pads

Double Pocket

Double-Fold Binding

Embroidery

Recycling

MEDIA

Regular Lead

Lightweight Lead

"LMG"*

BENEFITS

Most Economical and Recyclable

Lighter than Regular Lead and Recyclable

Lightest Weight, Lead-Free, Environmentally Friendly

PROTECTION

100% Lead

Lead-Tin

Tungsten-Antimony

ATTENUATION

0.5mm Pb Equiv. Protection averages **97% Attenuation** over 80,100,120 KVP

0.5mm Pb Equiv. Protection averages **96.8% Attenuation** over 80,100,120 KVP

0.5mm Pb Equiv. Protection averages **96.6% Attenuation** over 80,100,120 KVP

WEIGHT

9-lbs (based on medium front protection apron)

8-lbs (based on medium front protection apron)

7-lbs (based on medium front protection apron)

*Media is IEC/EN 61331-1 / ASTM Approved.

A Techno-Aide
Exclusive:

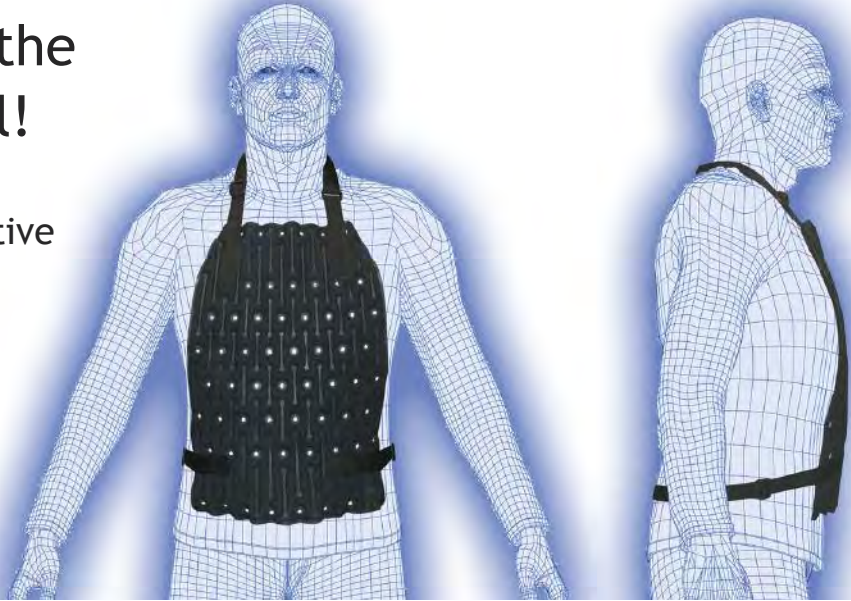
CTAV™ cooling Technology for Aprons & Vests

Keep your cool with the CTAV™ Cooling Panel!

Lightweight • Practical • Effective

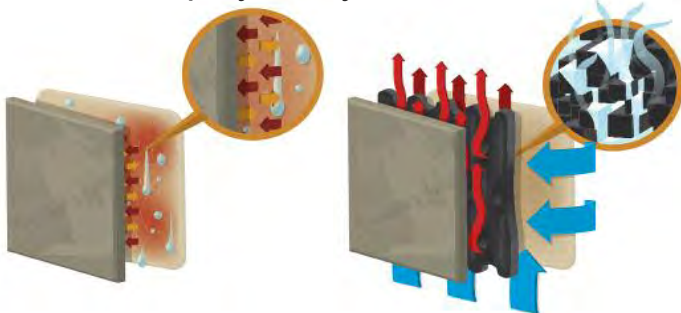
Patent Pending passive
cooling system uses:

- no circulating water
- no dangling tubes
- no ice packs
- no hazardous chemicals



Featuring EVERDRY™

Antimicrobial, antifungal nanocrystal
surface keeps you dry and comfortable.

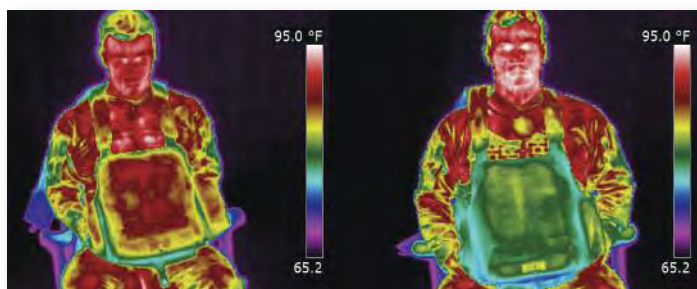


Without **CTAV™**:

- Heat and moisture are trapped between the skin and apparel.
- Sweat cannot evaporate.
- Increased fatigue.
- Heat stress and loss of alertness, concentration, and focus.

With **CTAV™**:

- Air flows across the torso and CTAV™ panel.
- Body heat escapes through passive convection.
- Metabolic heat is conducted into inflated chambers and naturally vents from behind apparel.



Up to 16.2% or 9° reduction in body heat!

The story:

CTAV™ technology was originally designed to keep police and military personnel cool under pressure while wearing a shielded vest or flack jacket.

Now, Techno-Aide is proud to bring this technology to you, to keep you cool when wearing radiation protection garments for extended or multiple exams.

Features and benefits of **CTAV™**:

- Heat is no longer trapped between you and your apron or vest.
- Passive cooling convective airflow allows your body heat to escape.
- Increased natural ventilation of metabolic body heat.
- Does not affect range of motion.
- Ribbed, air-filled panel dissipates heat and heat storage from the body and the apron or vest.
- Quick harness is repositionable to make the perfect fit for you.
- Quick-action hand air pump is included.

CTAV™ Cooling Panels

cat.#	actual panel size	price
QCTAV-C1012	10" x 12"	\$149.00
QCTAV-C1114	11" x 14"	\$149.00
QCTAV-C1116	11" x 16"	\$149.00



Buckle

EZ•Guard All Purpose Apron

Most Popular Apron!

- EZ-On / EZ-Off.
- Available with hook & loop or 2" buckle closure.
- 0.5mm Pb equivalency protection (0.375mm available).
- Free dual pocket and shoulder pads.



Hook & Loop cat.#	Buckle Closure cat.#	lead type	petite small medium	large x-large	2X 3X
QEVR	QEBR	Regular	\$205.00	\$220.00	\$245.00
QEVL	QEBL	Light Wt.	\$260.00	\$285.00	\$310.00
QEVG	QEBG	LMG Lead-Free	\$310.00	\$330.00	\$360.00



Buckle

Flex•Guard Flexible-Back Apron

- Stretch back provides greater comfort by placing more weight on the hips and less weight on the shoulders.
- Available with hook & loop or 2" buckle closure.
- 0.5mm Pb equivalency protection (0.375mm available).
- Free dual pocket and shoulder pads.

Hook & Loop cat.#	Buckle Closure cat.#	lead type	petite small medium	large x-large	2X 3X
QFVR	QFBR	Regular	\$215.00	\$230.00	\$255.00
QFVL	QFBL	Light Wt.	\$275.00	\$295.00	\$325.00
QFVG	QFBG	LMG Lead-Free	\$325.00	\$340.00	\$365.00



Econo•Guard Economy Apron



Excellent Protection, Value Priced

- 1" buckle closure (long enough to tie).
- 0.5mm Pb equivalency front protection.
- Available in any fabric.
- See Best-Fit size chart on page 10.

cat.#	lead type	petite small medium	large x-large	2X 3X
QEGR	Regular	\$135.00	\$155.00	\$180.00
QEGL	Light Wt.	\$215.00	\$235.00	\$265.00
QEGG	LMG Lead-Free	\$280.00	\$295.00	\$325.00



Female Vest



Male Vest

**Newly Tailored
to assure the most
Comfortable Fit!**



Female Kilt



Male Kilt

Vest•Guard

New Design: Saves Weight, Better Fit

- Separate Men and Women's styles for best comfort.
- Full front overlap design saves weight.
- Distributes weight between shoulders and hips.
- 0.5mm Pb equivalency protection front, 0.25mm back.
- Hook & loop closure is fast and easy.
- Free dual pocket and shoulder pads.

VEST•GUARD Female

cat.#	lead type	petite small medium	large x-large	2X 3X
QVFR	Regular	\$185.00	\$200.00	\$225.00
QVFL	Light Wt.	\$250.00	\$275.00	\$300.00
QVFG	LMG Lead-Free	\$290.00	\$310.00	\$335.00

VEST•GUARD Male

cat.#	lead type	petite small medium	large x-large	2X 3X
QVMR	Regular	\$190.00	\$205.00	\$230.00
QVML	Light Wt.	\$260.00	\$280.00	\$310.00
QVMG	LMG Lead-Free	\$310.00	\$330.00	\$360.00

(Vests do not include the two 1" safety buckles as shown. If you would like these as a *FREE Add-On*, please specify at the time of ordering.)

**See Best-Fit
Sizing Chart
on page 10.**

Skirt/Kilt•Guard

All Day Comfort for the Lower Body

- Separate Men and Women's styles for best comfort.
- Weight is distributed evenly around hips.
- Wrap around protection: .5mm Pb Eq front, .25mm back.
- Hook & loop closure with 2" safety buckle.
- Free pocket and waist pad.

SKIRT•GUARD Female

cat.#	lead type	petite small medium	large x-large	2X 3X
QSFR	Regular	\$185.00	\$200.00	\$225.00
QSFL	Light Wt.	\$250.00	\$275.00	\$300.00
QSFG	LMG Lead-Free	\$290.00	\$310.00	\$335.00

KILT•GUARD Male

cat.#	lead type	petite small medium	large x-large	2X 3X
QKMR	Regular	\$190.00	\$205.00	\$230.00
QKML	Light Wt.	\$260.00	\$280.00	\$310.00
QKMG	LMG Lead-Free	\$310.00	\$330.00	\$360.00



STANDARD

cat.#	lead type	price
QTYR	Regular	\$49.00
QTYL	Light Wt.	\$58.00
QTYG	LMG Lead-Free	\$70.00

Binding all around means affordable comfort and flexibility.



NO BINDING

cat.#	lead type	price
QTNR	Regular	\$64.00
QTNL	Light Wt.	\$72.00
QTNG	LMG Lead-Free	\$84.00

No binding means extra comfort, flexibility and lighter weight.



MID-BINDING

cat.#	lead type	price
QTVR	Regular	\$57.00
QTVL	Light Wt.	\$65.00
QTVG	LMG Lead-Free	\$77.00

No binding at the top means extra comfort under the chin.

ATTACHED STANDARD

cat.#	lead type	price
QTAR	Regular	\$61.00
QTAL	Light Wt.	\$69.00
QTAG	LMG Lead-Free	\$82.00

ATTACHED NO BINDING

cat.#	lead type	price
QTCR	Regular	\$77.00
QTCL	Light Wt.	\$83.00
QTCG	LMG Lead-Free	\$94.00

ATTACHED MID-BINDING

cat.#	lead type	price
QTWR	Regular	\$69.00
QTWL	Light Wt.	\$77.00
QTWG	LMG Lead-Free	\$88.00



Thyro•Guards

All Attached Thyroid Collars include:

- Snap ring for easy collar attachment.
- Attach anytime with tethered strap.
- Unique 2-in-1 pocket design: store collar in one pocket and use the other pocket for accessories.

- Collars are 6" tall x 6 1/2" wide x 24" strap.
- Select **COLOR** and **FABRIC** on page 13.
- Default color is **Royal Blue**.
- **FREE Embroidery**; see 10 for options.
- 2-Year warranty on materials and labor.



Guard•Tote Apparel Tote Bag

#QACB-28
\$99.00



- Convenient tote for all your protective wear.
- Durable rip-stop nylon fabric with zippered closure.
- 28" long to minimize folding your aprons.
- EZ-Carry handle and shoulder strap included.

Belt•Guard Back Support Belt

#QBGB
\$45.00



- Helps reduce back stress.
- Can be used with any apron.
- 6" elastic back support belt with 2" buckle closure.

Protective Gloves and Mittens for Imaging

Hand•Guard Protective Gloves

- Five fingered protection for full dexterity.
- Durable, soft navy vinyl covering (15").
- 0.5mm Pb equiv. dip-molded core.

HAND•GUARD 5-Finger

cat.#	hand	price
QHGP	Pair	\$220.00
QHGR	Right Hand	\$122.00
QHGL	Left Hand	\$122.00



Palm•Guard

Protective Mittens (Slitted)

- Provides hand protection with option of exposing fingers for dexterity.
- Durable, soft navy vinyl covering (15").
- 0.5mm Pb equiv. dip-molded core.

PALM•GUARD Slitted

cat.#	hand	price
QPSP	Pair	\$290.00
QPSR	Right Hand	\$149.00
QPSL	Left Hand	\$149.00



Palm•Guard

Protective Mittens (Economy)

- Flexible for grasping and holding.
- Colorful fabric on one side (see page 13) and soft-touch neutral on the palm side.
- 0.5mm Pb equivalency.

PALM•GUARD Non-Slit

cat.#	hand	price
QMGP	Pair	\$110.00
QMGR	Right Hand	\$65.00
QMGL	Left Hand	\$65.00



Omni•Guard

Protective Flexible Shield



- Used over an animal or equipment, protects from radiation exposure.
- Used underneath an animal, prevents scatter radiation.
- All purpose covering for humans, animals or equipment.
- 0.5mm Pb equivalency protection.
- Choose any color fabric from page 13.



cat.#	lead type	small	medium	large	x-large
QOMR	Regular	\$107.00	\$144.00	\$169.00	\$192.00
QOML	Light Wt.	\$149.00	\$187.00	\$239.00	\$292.00
QOMG	LMG Lead-Free	\$235.00	\$299.00	\$369.00	\$520.00

size	(width x length)
S	(18" x 18")
M	(24" x 24")
L	(24" x 36")
X	(24" x 48")

Eye•Guard: radiation protective eyewear

Contour fit for ultra protection



Ultra•Guard

Ultra-light and super stylish.

- Curved lens adds to lateral protection.
- Regular hinges with wrap around frame.
- Universal bridge support.
- Available in most prescriptions.
- Includes premium case.
- Lead Equiv.: 0.75mm lens.
- Weight: 60 grams.
- Frame: impact resistant polycarbonate.

ULTRA•GUARD

SILVER	BLACK	TAUPE	lens style	price
QLER-9SPL	QLER-9KPL	QLER-9TPL	Non-Prescription	\$195.00
QLER-9SSV	QLER-9KSV	QLER-9TSV	Single Vision Rx*	\$320.00
QLER-9SBI	QLER-9KBI	QLER-9TBI	Bifocal Rx*	\$340.00

*(Prescription MUST accompany order. Progressive Lens Available. Non-returnable.)



Color•Guard

Bright-tone colorful Ultra•Guards.

- Curved lens adds to lateral protection.
- Regular hinges with wrap around frame.
- Universal bridge support.
- Available in most prescriptions.
- Includes premium case.
- Lead Equiv.: 0.75mm lens.
- Weight: 60 grams.
- Frame: impact resistant polycarbonate.

COLOR•GUARD

RED	BLUE	ORANGE	lens style	price
QLER-CRPL	QLER-CBPL	QLER-COPL	Non-Prescription	\$195.00
QLER-CRSV	QLER-CBSV	QLER-COSV	Single Vision Rx*	\$320.00
QLER-CRBI	QLER-CBBI	QLER-COBI	Bifocal Rx*	\$340.00

*(Prescription MUST accompany order. Progressive Lens Available. Non-returnable.)



Wrap•Around

The “original” with great side protection.



- Generous lens area increases protection.
- Spring hinges and adjustable nose.
- Available in most prescriptions.
- Includes premium case.
- Lead Equiv.: 0.75mm lens.
- Frame: impact resistant plastic.

New Colors!

WRAP•GUARD

Tortoise	Green	Crimson	Purple	Blue	lens style	price
QLES-53PLT	QLES-53PLG	QLES-53PLC	QLES-53PLP	QLES-53PLB	Non-Prescription	\$215.00
QLES-53SVT	QLES-53SVG	QLES-53SVC	QLES-53SVP	QLES-53SVB	Single Vision Rx*	\$340.00
QLES-53BIT	QLES-53BIG	QLES-53BIC	QLES-53BIP	QLES-53BIB	Bifocal Rx*	\$360.00

*(Prescription MUST accompany order. Progressive Lens Available. Non-returnable.)

Eye•Guard: radiation protective eyewear

Contemporary designs for style and comfort



POWER•GUARD

BLUE/ORANGE	SILVER/PINK	BLACK/GRAY	lens style	price
QLER-PBPL	QLER-PSPL	QLER-PKPL	Non-Prescription	\$215.00
QLER-PBSV	QLER-PSSV	QLER-PKSV	Single Vision Rx*	\$340.00
QLER-PBBI	QLER-PSBI	QLER-PKBI	Bifocal Rx*	\$360.00

*(Prescription MUST accompany order. Progressive Lens Available. Non-returnable.)

Power•Guard

Colortone accents increase comfort.

- Large lens area for excellent coverage.
- Soft colored endpiece for comfort and fit.
- Padded bridge, temples, and endpiece.
- Available in most prescriptions.
- Includes premium case.
- Lead Equiv.: 0.75mm lens.
- Weight: 64 grams.
- Frame: impact resistant polycarbonate.



WIRE•GUARD

Black	Silver	lens style	price
QLER-WKPL	QLER-WSPL	Non-Prescription	\$195.00
QLER-WKSV	QLER-WSSV	Single Vision Rx*	\$320.00
QLER-WKBI	QLER-WSBI	Bifocal Rx*	\$340.00

*(Prescription MUST accompany order. Non-returnable)

Wire•Guard

Classic light-weight wire frame glasses.

- Offers the best protection on a metal frame.
- Tapered endpiece and adjustable bridge.
- Super lightweight for medium to large faces.
- Available in most prescriptions.
- Includes premium case.
- Lead Equiv.: 0.75mm lens.
- Weight: 60 grams.
- Frame: metal wire frames.



COVER•GUARD

BLACK	WHITE	TORTOISE	lens style	price
QLES-CKPL	QLES-CWPL	QLES-CTPL	Non-Prescription	\$150.00

Cover•Guard

Comfortable protection over regular glasses.

- Excellent front and side visibility.
- Provides limited splash protection.
- Can be worn over prescription eyewear.
- Regular hinges with molded nose piece.
- Includes 0.75mm Pb glass side shields.
- Includes premium case.

- Lead Equiv.: 0.75mm front and sides.
- Weight: 85 grams.
- Frame: black rubberized nylon.

Best-Fit Sizing Charts

Front Protection Apron

size	width	length	fits chest
Petite	18"	30"	< 36"
Small	20"	32"	< 40"
Medium	22"	36"	< 44"
Large	24"	38"	< 48"
X-Large	26"	40"	< 52"
2X	28"	40"	< 56"
3X	30"	40"	< 60"

Sizes shown for apparel *other than* Front Protection are actual body measurements.

All **lengths** are from the sternal notch or waist downward, depending on the garment.

We have revamped our patterns and sizes to assure you a confident fit!

Vest (female)

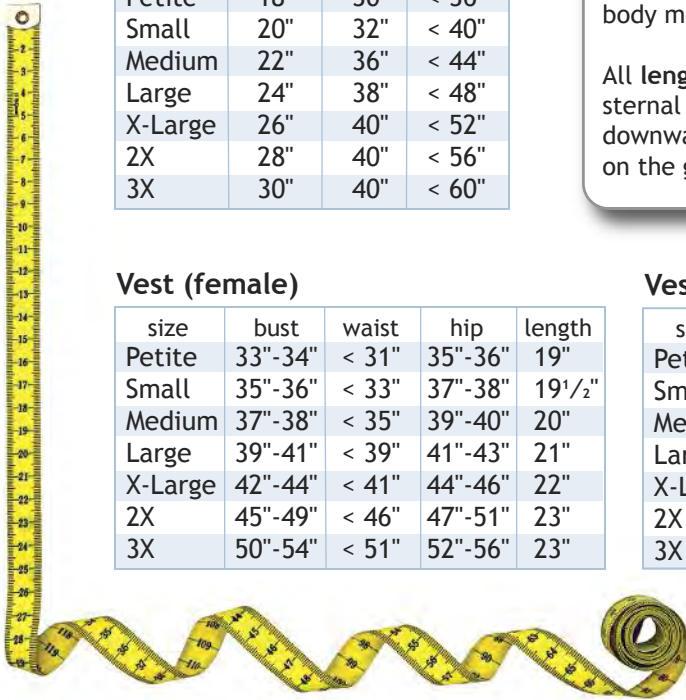
size	bust	waist	hip	length
Petite	33"-34"	< 31"	35"-36"	19"
Small	35"-36"	< 33"	37"-38"	19 1/2"
Medium	37"-38"	< 35"	39"-40"	20"
Large	39"-41"	< 39"	41"-43"	21"
X-Large	42"-44"	< 41"	44"-46"	22"
2X	45"-49"	< 46"	47"-51"	23"
3X	50"-54"	< 51"	52"-56"	23"

Vest (male)

size	chest	length
Petite	35"-36"	19 1/2"
Small	37"-38"	20"
Medium	39"-41"	21"
Large	42"-44"	22"
X-Large	45"-49"	23"
2X	50"-54"	24"
3X	55"-59"	24"

Skirt / Kilt

size	waist	hip	length
Petite	25"-27"	32"-34"	19"
Small	28"-29"	35"-36"	19"
Medium	30"-33"	37"-40"	20"
Large	34"-37"	41"-44"	21"
X-Large	38"-41"	45"-48"	22"
2X	42"-45"	49"-52"	22"
3X	46"-50"	53"-57"	22"

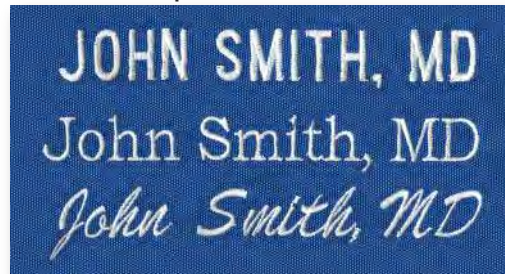


Embroidery (FREE Option!)

- Selected Techno-Aide Protective Apparel comes with FREE embroidery!
- Please specify what you want embroidered and which type style you prefer ("BLOCK" is used if not specified).
- Default capitalization: "BLOCK" is generally all-caps; "Script" uses both upper and lower cases.
- Embroidered items are non-returnable, non-refundable.

First Line up to 24-Letters: \$FREE!

Select a Style:



ALL CAPS (default)

Block

Script

Additional lines up to 24-letters: \$10.00

Free Stock Embroidery Options

Please specify by number-name. Other designs available - call us!



#VEG-Flag



#VED-DogA



#VED-DogB



#VED-PuppyBones



#VED-Bone



#VEF-Ducks



#VEE-HorseShoe



#VEC-CatA



#VEC-Kittens



#VEC-CatB



#VEG-Pals

Getting the Best-Fit (See standard sizes on page 10.)

If you don't think that our standard sized garments will fit you properly, we are pleased to offer you the chance to create your own size, to fit your specific body measurements. Just complete the form below and we will create your customized protective wear. Please note, that due to the nature of customized apparel, these garments cannot be returned. *Please be accurate.* Thanks!

NAME _____

FACILITY _____

ADDRESS 1 _____ ADDRESS 2 _____

CITY _____ STATE _____ ZIP _____

DAYTIME PHONE _____ EMAIL _____

APRON CAT.# _____ DESCRIPTION _____ LEAD TYPE _____

FABRIC (p25) _____ BINDING COLOR (p24) _____

EMBROIDERY (OPTIONAL) LINE 1, UP TO 24-LETTERS (FREE) _____

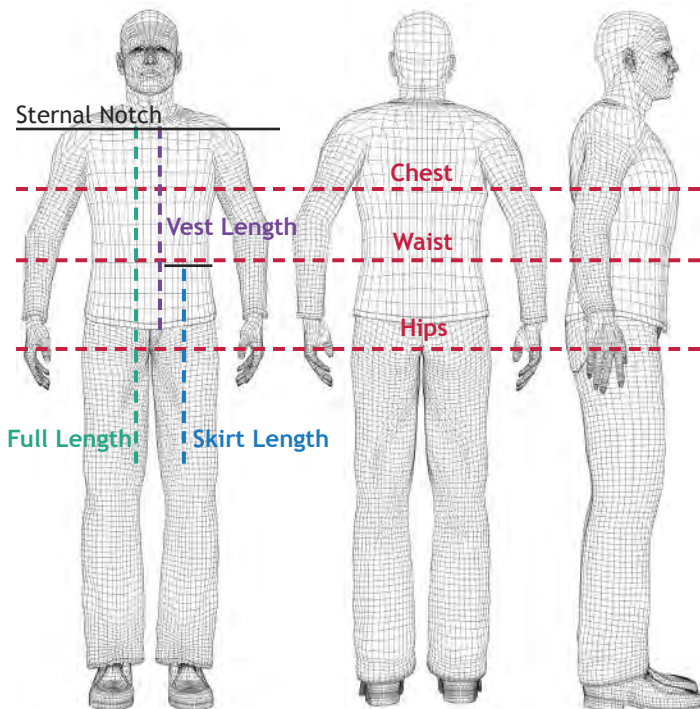
EMBROIDERY LINE 2, UP TO 24-LETTERS (\$10.00) _____

EMBROIDERY THREAD COLOR (p24) _____ LETTER STYLE (p24) _____

ADD ATTACHED THYROID COLLAR? YES NO CAT.# _____ (COLOR WILL MATCH APRON)

SPECIAL COMMENTS _____

Getting Accurate Measurements *(all in inches)*



BUST/CHEST: _____

Circumference around the widest part of your chest.

WAIST: _____

Standard Apron: measure your waistline.
Skirt/Kilt: measure where you want the skirt/kilt top (may be higher than your regular waistline).

HIP: _____

Circumference around the widest part of your hips.

LENGTH:

FRONT APRON: _____

Sternal notch to just above the knee.

VEST: _____ + 2" = _____

Sternal Notch to top of skirt/kilt, plus 2" overlap.

SKIRT/KILT: _____

Desired skirt/kilt top (may be above your regular waistline) to just above your knee.

Please photocopy this page to submit your order.

Apron/Glove Racks

- Designed for one apron, but will hold more.
- All steel, heavy duty construction.
- 16" & 24" mounting holes match most wall studs.
- Glove holders mounted onto back panel.
- 28 1/2" long x 1 3/4" diameter bar prevents creasing.
- Ships @ 13 lbs.



Rack without Glove Holders
#QAGR-105 \$145.00



Rack with Two Glove Holders
#QAGR-110 \$195.00



Rack with Four Glove Holders
#QAGR-115 \$245.00

Apron Peg Racks



2-peg
(for 1 apron)
#QARP-02
\$53.00



- 6" pegs are angled to keep garments from slipping.
- Mounting holes on the 6-peg and 8-peg racks are on both 16" and 24" centers.
- All-steel Almond enamel finish.
- 2-Peg ships @ 4 lb. 6-Peg ships @ 10 lbs.

6-peg
(for 3 aprons)
#QARP-06
\$110.00



Wall Mounted Apron Racks



10-ARM #QARW-10 \$340.00



5-ARM, SWING LEFT #QARW-L5 \$199.00

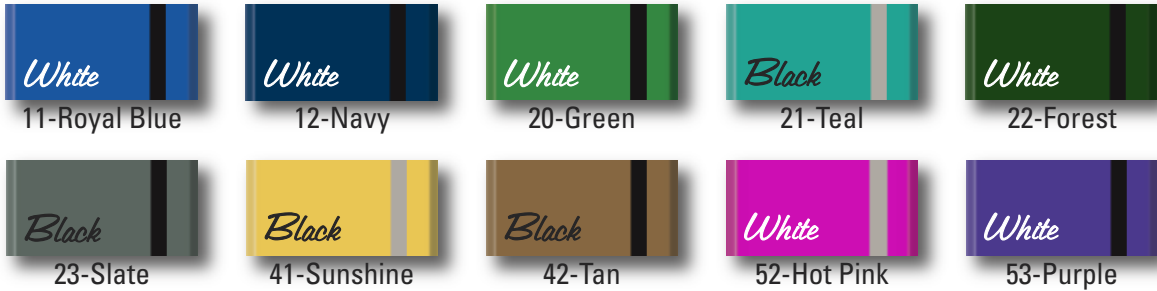


5-ARM, SWING RIGHT #QARW-R5 \$199.00

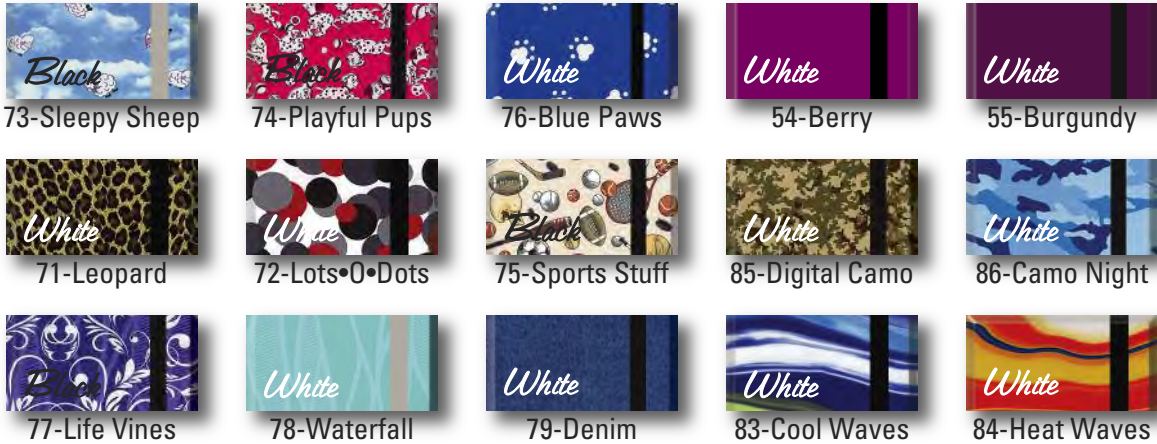
- Ten (10) or five (5) swing-arm wall-mount apron racks.
- Mounting holes on 16" centers.
- All-steel durability.
- Almond enamel finish.
- 10-Arm Ships @ 25 lb. / 5-Arm Ships @ 17 lb.



Nylon Liquid Repellent



Polyester Prints



(NOTE: Prints are shown SMALLER than actual size)

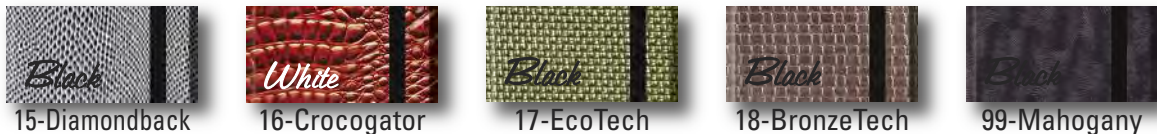
Ripstop Nylon Filament Reinforced Diamond Polyester



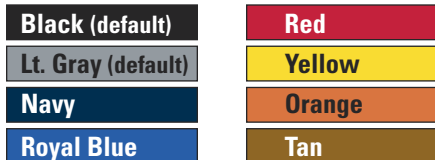
Galaxy Prints High Sheen Liquid Proof PU Laminate



High-Tech Fabrics Textured



Optional BINDING Colors:



(The black or gray stripe on each fabric square is the default binding color for that fabric.)

Optional EMBROIDERY Colors:



Cleaning Your Apron

alcohol super wipes

#QGWP-P55 \$12.50/each tub

Save on shipping:

#QGWP-P55CS \$153.00/case of 12 tubs

- Use once, throw away, quick drying.
- Contains the highest range of effectiveness.
- Alcohol content: High @ 55%.
- Recommended Contact Time: 2-minutes or less.
- Great for cleaning and disinfecting **APRONS**.



RECTANGLE POSITIONING SPONGES

NON-COATED STANDARD GRAY SPONGE

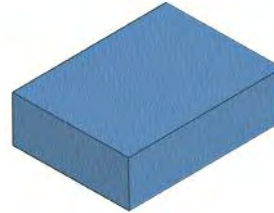
COATED STANDARD SPONGE

(For COATED SPONGES ONLY:
edges may appear on images.)

#QUFBL
\$11.50



3" RECTANGLE
7.5 X 10 X 3



#QUCBL
\$42.50

#QUFBO
\$22.50



4" SQUARE SPONGE
10 X 10 X 4



#QUCBO
\$70.50

#QUFBR
\$3.50



1" RECTANGLE
4 X 6 X 1

#QUFBT
\$5.50



2" RECTANGLE
4 X 6 X 2

#QUFBK
\$12.50/set



RECTANGLE MAT (SET OF 2)
18 X 24 X 0.25

RECTANGLE USES:

- Use between stifles to maintain alignment.
- To elevate the head/extremities for proper positioning.
- To elevate the body for lateral decubitus views.

SPECIALTY USES:

- To maintain alignment and duplicate positioning.
- To decrease motion and improve quality.
- To elevate the head above the shoulders.

(Other shapes and sizes available.)

#QUFAH
\$40.00



BOLSTER BLOCK
10 X 12 X 8



#QUCAH
\$117.00

#QUFAK
\$11.50

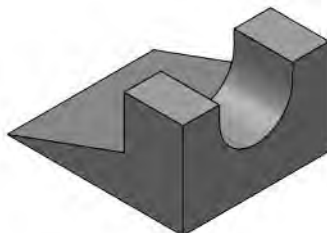


CIRCULAR BLOCK
7 X 1.5

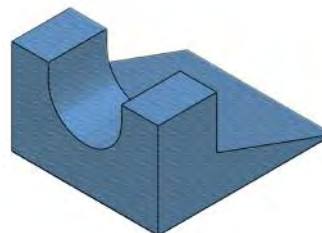


#QUCAK
\$26.00

#QUFAL
\$35.00



RAMP SUPPORT
12 X 10 X 6.5



#QUCAL
\$77.00



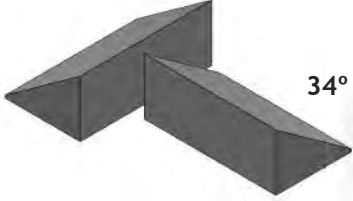
WEDGE POSITIONING SPONGES

NON-COATED STANDARD GRAY SPONGE

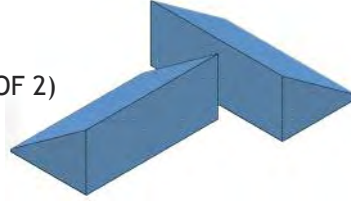
COATED STANDARD SPONGE

(For COATED SPONGES ONLY:
edges may appear on images.)

#QUFBE
\$12.50/set



34° WEDGE (SET OF 2)
4 X 7 X 3



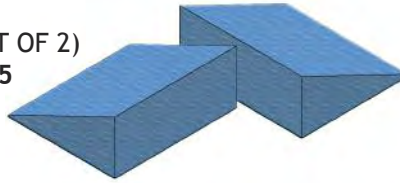
#QUCBE
\$45.00/set



#QUFBH
\$16.50/set



16° WEDGE (SET OF 2)
7 X 8 X 3.5



#QUCBH
\$84.00/set

#QUFBJ
\$13.50/set



12° WEDGE (SET OF 2)
9.5 X 7.25 X 2.25



#QUCBJ
\$80.00/set

WEDGE USES:

- Lateral projection of pelvis when placed between hind limbs.
- To maintain horizontal alignment of sternum and spine.
- Placed under sternum to keep ribs superimposed for lateral thorax.
- For lateral view of extremities to keep body parts lateral or extended in proper position and helps keep the stifle parallel to the image receptor.
- For oblique positioning.

(Other sizes available.)

#QUFBB
\$20.00



45° WEDGE
7 X 14 X 7



#QUCBB
\$73.50

#QUFBC
\$17.50

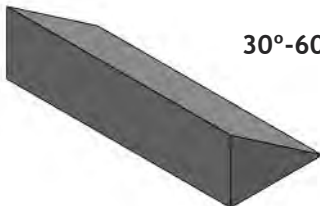


45° WEDGE
7 X 7 X 7

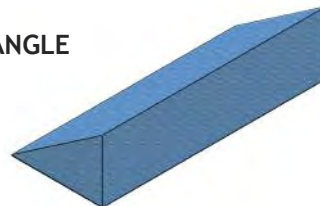


#QUCBC
\$47.50

#QUFBU
\$27.50



30°-60°-90° MULTI-ANGLE
10 X 24 X 6



#QUCBU
\$195.00

#QUFBG
\$11.50



21° WEDGE
10 X 10 X 4.63



#QUCBG
\$67.50



GENERAL SPONGE KITS



(For COATED SPONGES ONLY: edges may appear on images.)



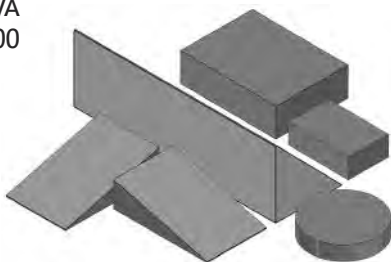
VET KIT A

Uncoated **OR** Coated Kit includes:

UNCOATED	DESCRIPTION	COATED
QUFBD	45° Wedge (7x21.5x7)	QUCBD
QUFBI	(2) 15° Wedge (11x7x3)	QUCBI
QUFBL	Rectangle (7.5x10x3)	QUCBL
QUFBT	Rectangle (4x6x2)	QUCBT
QUFAK	Circular Block (7x1.5)	QUCAK

NON-COATED
#QUKVA
\$68.00

COATED
#QUSVA
\$285.00



VET KIT B

Uncoated **OR** Coated Kit includes:

UNCOATED	DESCRIPTION	COATED
QUFBE	(2) 34° Wedge ((4x7x3)	QUCBE
QUFBK	(2) Rectangle (18x24x.25)	QUFBK (not coated)
QUFBG	21° Wedge (10x10x4.63)	QUCBG
QUFAH	Bolster (10x12x8)	QUCAH
QUFAL	Ramp Support (12x10x6.5)	QUCAL
QUFAM	Cradle (10x11x6.75)	QUCAM

NON-COATED
#QUKVB
\$141.00

COATED
#QUSVB
\$425.00



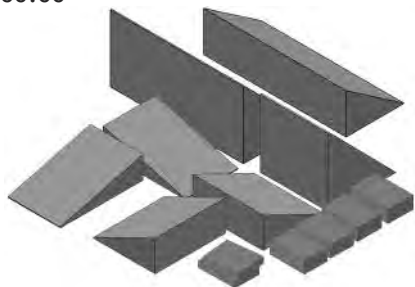
VET KIT C

Uncoated **OR** Coated Kit includes:

UNCOATED	DESCRIPTION	COATED
QUFBI	(2) 15° Wedge (11x7x3)	QUCBI
QUFBC	45° Wedge (7x7x7)	QUCBC
QUFBH	(2) 16° Wedge (7x8x3.5)	QUCBH
QUFBB	45° Wedge (7x14x7)	QUCBB
QUFBU	15°-30°-60° Wedge (10x24x6)	QUCBU
QUFBR	(2) Rectangle (4x6x1)	QUFBR (not coated)
QUFBT	(4) Rectangle (4x6x2)	QUCBT

NON-COATED
#QUKVC
\$120.00

COATED
#QUSVC
\$560.00



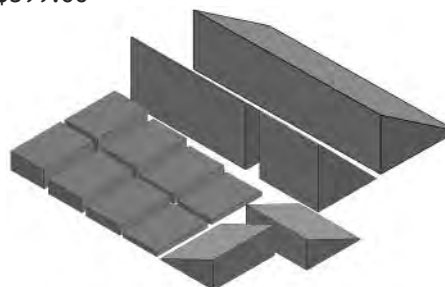
VET KIT D

Uncoated **OR** Coated Kit includes:

UNCOATED	DESCRIPTION	COATED
QUFBH	(2) 16° Wedge (7x8x3.5)	QUCBH
QUFBC	45° Wedge (7x7x7)	QUCBC
QUFBB	45° Wedge (7x14x7)	QUCBB
QUFBU	15°-30°-60° Wedge (10x24x6)	QUCBU
QUFBQ	(2) Rectangle (4x6x.5)	QUFBQ (not coated)
QUFBR	(2) Rectangle (4x6x1)	QUFBR (not coated)
QUFBS	(2) Rectangle (4x6x1.5)	QUFBS (not coated)
QUFBT	(2) Rectangle (4x6x2)	QUFBT (not coated)

NON-COATED
#QUKVD
\$122.00

COATED
#QUSVD
\$399.00



Immobilizer Poly Bag Covers

- 2mil bags protect foam blocks.
- Prevents contamination.
- Non-sterile.
- Bag size is immobilizer size.

Cat.#	Description	Qty./Ctn	Price
QNVC-S	Poly Cover: Small	1000/ctn	\$145.00
QNVC-M	Poly Cover: Medium	500/ctn	\$145.00
QNVC-L	Poly Cover: Large	500/ctn	\$245.00
QNVC-X	Poly Cover: X-Large	200/ctn	\$245.00



Veterinary Immobilizers



NON-COATED STANDARD GRAY SPONGE

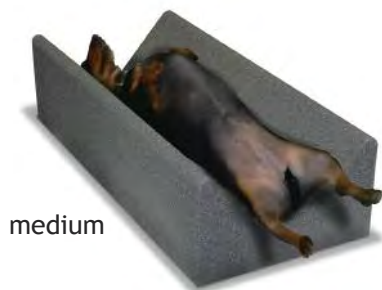
Soft, open cell, polyurethane foam provides excellent support and comfort. This foam has minimal attenuation, is fire retardant, and has been the industry standard for decades. **(NOT claw or teeth proof!)**



COATED STANDARD SPONGE

This is the same standard gray sponge outlined above, but is coated with a medical-grade, durable and easy-to-clean vinyl surface that is resistant to blood, Betadine®, barium, alcohol, oils and other fluids. Attenuation is very low (*edges may show, depending on techniques*).

Ideal for sterile environments. **(NOT claw or teeth proof!)**



- Decrease motion and position animals for a variety of procedures.
- Ideal for ventrodorsal view of thorax.
- Non-coated sponges can be placed in covers to keep clean from urine and feces.
- Coated immobilizers can be cleaned for instant reuse.
- As with any soft styled product of this nature, please be aware of claw and teeth punctures to preserve the long life of the sponge or coating.



Non-Coated Immobilizers

cat.#	size	length x width x height	Price
QUFCA	small	10" x 4" x 3"	\$21.00
QUFCB	medium	15" x 7" x 5"	\$35.00
QUFCC	large	24" x 11" x 7"	\$66.50
QUFCD	x-large	36" x 14" x 9"	\$118.00

Coated Immobilizers

cat.#	size	length x width x height	Price
QUCCA	small	10" x 4" x 3"	\$49.00
QUCCB	medium	15" x 7" x 5"	\$108.00
QUCCC	large	24" x 11" x 7"	\$245.00
QUCCD	x-large	36" x 14" x 9"	\$325.00

Covered Immobilizers

cat.#	size	length x width x height	Price
QUVCA	small	10" x 4" x 3"	\$59.00
QUVCB	medium	15" x 7" x 5"	\$79.00
QUVCC	large	24" x 11" x 7"	\$99.00
QUVCD	x-large	36" x 14" x 9"	\$149.00

COVERED STABILIZER SPONGE

This is the same standard gray sponge outlined above, but is covered with "Techno-Tuff" nylon reinforced vinyl. It also features hook & loop straps with which to secure limbs while in position.



Sandbags

- Adequate weight to secure limbs during positioning.
- Stabilizes skull and neck dorsally.
- Provides immobilization to avoid manual restraint.
- All sandbags are filled with sand and are ready to use.
- Heat sealed inner sleeve prevents the leakage of sand.
- All seams are sewn and tear resistant.
- Outer cover is heavy gauge, reinforced vinyl.
- Every sandbag includes a reinforced webbing handle.



2-lb 4" x 9"
Cat.#QSBP-02
\$22.00 ea.



3-lb 5" x 9"
Cat.#QSBP-03
\$22.00 ea.



5-lb 5" x 12"
Cat.#QSBF-05
\$28.00 ea.



5-lb 7" x 9"
Cat.#QSBP-05
\$28.00 ea.



5-lb 9" x 9"
Cat.#QSBC-05
\$28.00 ea.



7-lb 10" x 10"
Cat.#QSBG-07
\$32.00 ea.



7-lb 6" x 14"
Cat.#QSBF-07
\$32.00 ea.



10-lb 7" x 16"
Cat.#QSBF-10
\$34.00 ea.



10-lb 11" x 11"
Cat.#QSBC-10
\$34.00 ea.



15-lb 12" x 12"
Cat.#QSBG-15
\$39.00 ea.

Sandbags Kits



general set (a)

#QSBK-GA \$219.00 set

- Set: (2) 3-lb/5" x 9" (2) 7-lb/6" x 14"
(1) 5-lb/5" x 12" (2) 10-lb/11" x 11"
(1) 5-lb/7" x 9"



general set (b)

#QSBK-GB \$169.00 set

- Set: (2) 3-lb/5" x 9"
(2) 7-lb/6" x 14"
(2) 10-lb/11" x 11"

Sandbag Colors
(Sandsocks *not* included)

- Green (default)
- Black
- Red
- Blue
- Yellow

Includes weight ID tag.



Sandsocks

- Sandsocks are loosely filled sandbags that contour to a broad range of shapes and forms.
- Stabilizes hard-to-hold and irregular anatomy.
- No need for additional person to hold the animal.
- Double seams for strength and longevity.
- Flexible, heavy gauge, reinforced vinyl.



Custom Sizes Available!

1-lb 2" x 8"

#QSBS-01
\$28.00 ea.



3-lb 4" x 12"

#QSBS-03
\$29.00 ea.



5-lb 5" x 15"

#QSBS-05
\$33.00 ea.



10-lb 6" x 20"

#QSBS-10
\$36.00 ea.



12-lb 6" x 25"

#QSBS-12
\$39.00 ea.



10-lb 6" x 28"

#QSBS-28
\$39.00 ea.



10-lb 6" x 34"

#QSBS-34
\$44.00 ea.



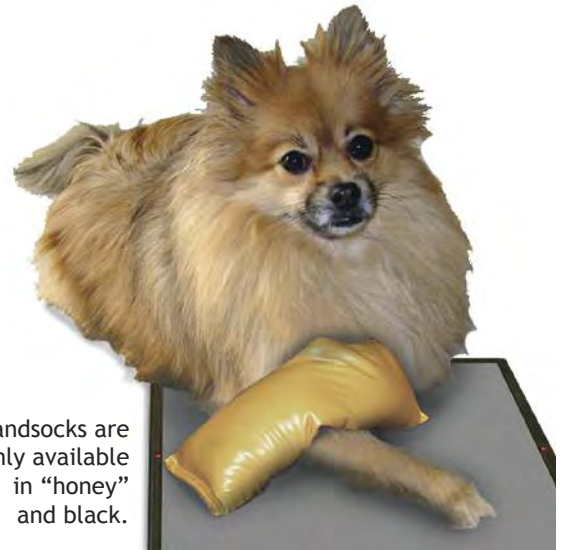
15-lb 6" x 40"

#QSBS-40
\$49.00 ea.



15-lb 6" x 46"

#QSBS-46
\$54.00 ea.



Sandsocks are only available in "honey" and black.



Includes weight ID tag.

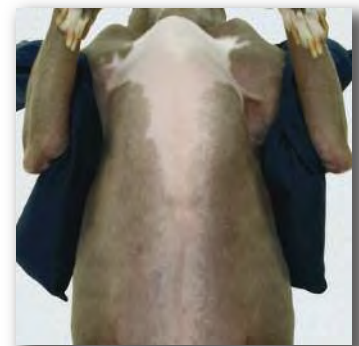


sandsock kit

#QSBK-SA \$157.00 set

(Contains the first five sandsocks shown.)

Set: (1) 1-lb/2" x 8" (1) 10-lb/6" x 20"
(1) 3-lb/4" x 12" (1) 12-lb/6" x 25"
(1) 5-lb/5" x 15"





#QPBMW-2472
(Call for Price)
Leaded Glass: 10"w x 12"h
Overall Size: 24"w x 72"h
Ships @ 350 lbs.



#QPBMW-3072
(Call for Price)
Leaded Glass: 10"w x 12"h
Overall Size: 30"w x 72"h
Ships @ 450 lbs.



#QPBMW-3672
(Call for Price)
Leaded Glass: 10"w x 12"h
Overall Size: 36"w x 72"h
Ships @ 450 lbs.

Viewing Window Barriers



#QPBMW-2484
(Call for Price)
Leaded Glass: 10"w x 12"h
Overall Size: 24"w x 84"h
Ships @ 450 lbs.



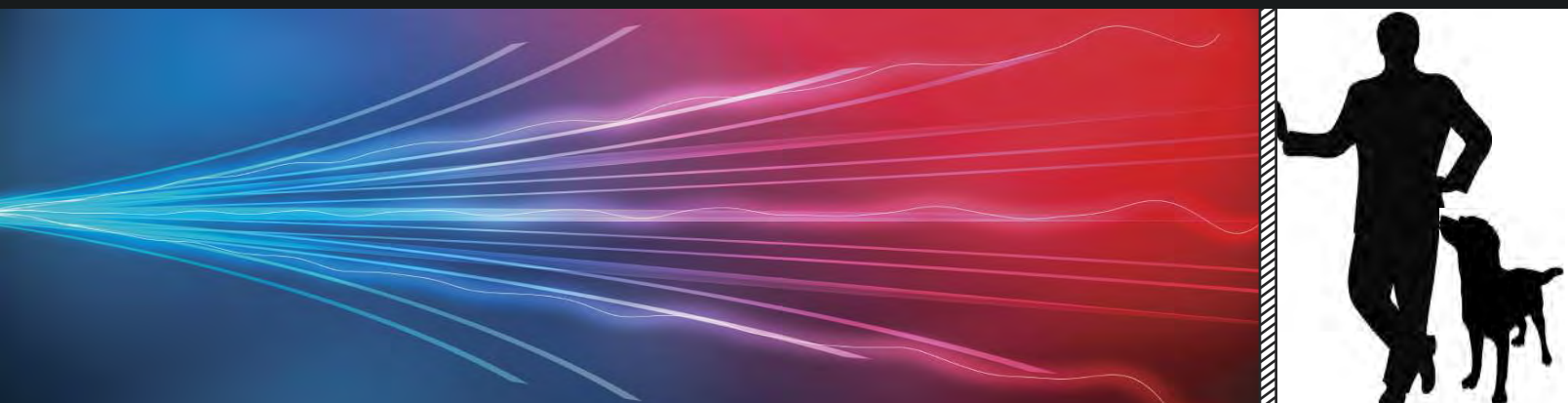
#QPBMW-3084
(Call for Price)
Leaded Glass: 10"w x 12"h
Overall Size: 30"w x 84"h
Ships @ 450 lbs.

Bring a full **2.0mm Pb Equivalency** of radiation protection anywhere you need it with our x-ray protective mobile barriers.

Each Barrier features:

- 10"w x 12"h clear window made of x-ray protective leaded glass;
- Window center is 60" from the bottom of the panel.
- Opaque barrier section is made of solid, leaded x-ray protection;
- Locking caster system for easy mobility (it is recommended that two people move the barrier for safety);
- Crated for secure shipment.
- NOTE: 84" barriers may not fit through some doorways.

Techno-Shield: Real Stopping Power!



Techno-Shield Mobile Barriers



#QPMB-3024
 (Call for Price)
 Leaded Glass: 30"w x 24"h
 Opaque Panel: 30"w x 48"h
 Overall Size: 33"w x 75"h
 Ships @ 450 lbs.



#QPMB-3060
 (Call for Price)
 Leaded Glass: 30"w x 60"h
 Opaque Panel: 30"w x 12"h
 Overall Size: 33"w x 75"h
 Ships @ 450 lbs.

Viewing Panel Barriers

Bring a full 2.0mm Pb Equivalency of radiation protection anywhere you need it with our x-ray protective mobile barriers.

Each Barrier features:

- Transparent/clear upper section of x-ray protective leaded glass;
- Opaque lower section of solid, leaded x-ray protection;
- Locking caster system for easy mobility (it is recommended that two people move the barrier for safety);
- Crated for secure shipment.



#QPMB-4830
 (Call for Price)
 Leaded Glass: 48"w x 30"h
 Opaque Panel: 48"w x 42"h
 Overall Size: 51"w x 75"h
 Ships @ 450 lbs.



#QPMB-4836
 (Call for Price)
 Leaded Glass: 48"w x 36"h
 Opaque Panel: 48"w x 36"h
 Overall Size: 51"w x 75"h
 Ships @ 650 lbs.



#QPMB-7236
 (Call for Price)
 Leaded Glass: 72"w x 36"h
 Opaque Panel: 72"w x 36"h
 Overall Size: 75"w x 75"h
 Ships @ 700 lbs.

A mobile barrier should offer greater protection than an apron. Techno-Shield provides **2.0mm Pb Equivalency** protection!

Leaded Glass panels by **Schott**, the world leader in protection and quality.

Standard Shield

- 0.5mm Pb equivalency.
- Shield area: 24" x 24", 36", or 48".
- Adjustable height: 36" to 60".
- Stable, five-legged star base.
- Default color: royal blue.

cat.#	shield style	width x height	price
QLPS-S2424	solid	24" x 24"	\$520.00
QLPS-S2436	solid	24" x 36"	\$555.00
QLPS-S2448	solid	24" x 48"	\$590.00



Deluxe Shield

- 0.5mm Pb equivalency.
- Shield area: 30" x 30" or 42".
- Adjustable height: 36" to 60".
- Steady all steel T-base.
- Hardened chrome steel post.
- **Posi-Lock** height adjustable arm with spring-loaded pin.
- Default color: royal blue.

cat.#	shield style	width x height	price
QLPS-T3030S	solid	30" x 30"	\$645.00
QLPS-T3030P	5-panel	30" x 30"	\$695.00
QLPS-T3042S	solid	30" x 42"	\$695.00
QLPS-T3042P	5-panel	30" x 42"	\$795.00



Lead Blockers



- Maximize efficiency and optimize use of imaging.
- Divides receptor for multiple exposures.
- Covered with blue vinyl laminate.
- Blockers are FLEXIBLE.
- 1mm lead equivalency.



cat.#	blocker size	fits cass./plate	price
QFLB-58	5" x 8" (13x18cm)	8 x 10	\$35.00
QFLB-52	5" x 12" (13x30cm)	10 x 12	\$45.00
QFLB-61	6" x 10" (15x24cm)	10 x 12	\$45.00
QFLB-71	7" x 11" (18x28cm)	11 x 14	\$55.00
QFLB-77	7" x 17" (18x43cm)	14 x 17	\$80.00
QFLS-78	set of all FIVE	Save 10%	\$234.00



CR Cart Drapes

- Protect receptor plates from scatter radiation.
- Specifically designed for the Agfa CR-30X cart or models of equal design and size.
- Provides 0.5mm Pb Equivalency shielding.
- Complete kit includes the four panels shown below, plus three 36" self-adhesive "loop" strips with which to easily attach the panels to the cart.
- Choose from dozens of fabric design and color options.



Protection
from
Scatter
Radiation!



Complete 4-Panel Kit
for CR30-X

#QTDP-C30
\$1320.00

Single Panel for
for CR10-X

#QTDP-C10
\$375.00



Left Side Panel
(#QTDP-3628)
6-flaps @ 36"w x 28"h



Right Side Panels
(#QTDP-2728)
4-flaps @ 27"w x 28"h
(#QTDP-0528)
1-flap @ 5"w x 28"h



Front Panel
(#QTDP-3628)
6-flaps @ 36"w x 28"h



Front Panel
(#QTDP-C10)
4-flaps @ 23"w x 28"h

Mobile Holder for CR/DR/Film Image Receptors Standard Tilt & Rotate

Standard Tilt & Rotate
(complete mobile unit)
#QMCH-33C
\$995.00

NEW!
Bilateral clamp
safely secures
receptors



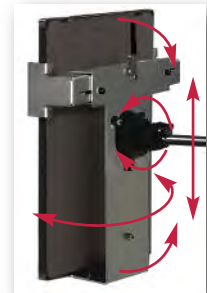
ALL MOBILE UNITS INCLUDE:

- Vertical range from bottom of image receptor: floor-to-54".
- *Posi-Lock* height adjustable arm with spring-loaded pin.
- Features 60" chromed steel post.
- 24" H-Base with locking casters.
- Broad base prevents tipping.
- Platinum baked enamel finish.
- Ships in two cartons: 1@15#, 1@45#.

**H-Style Base
Provides Greater
Stability and
Movement!**

- Standard arm length provides maximum stability.
- Fully articulating holder.

Range of Motion



- Straight Vertical
- Incline Forward
- Incline Backward
- Rotate or Oblique Tilt
- Face Up
- Face Down

Posi-Lock Handle



- (1) Pull the Pin
- (2) Slide the Holder
- (3) Release to Lock

Tabletop Lateral Cassette/CR-Plate/DR-Plate Holders



24" Variable Height
CR-Plate/Cassette Holder
#Q35LCH
\$220.00



24" Variable Height
DR-Plate Holder
#Q40LDH
\$250.00

- Accepts grids and caps (channel is 1 1/4" d).
- Upper and lower channels slide on 24" post.
- Holds plates/cass. for up to 14" x 17" image sizes.
- Base plate slides under patient or pad.
- 35LCH upper channel includes a R & L marker.
- 40LDH features an upper channel that fits into handle and an extra large base for stability.
- Upper and lower channels are lined with rubber.
- Shipping weight: 35LCH @ 7 lbs / 40LDH @ 9 lbs.



Equine Cassette/CR-Receptor Holder



Cat.# QNE305
\$275.00

- 72" tall post allows a variety of views.
- 12-gauge steel base provides stability.
- Two 6" wide channels adjust to fit cassette or CR plate.
- Holds up to 14" x 17" standard cassettes; can hold 14" x 36" or 51".
- Adjustable from ground upward.
- Accepts Grid Cassettes.
- Ships in two cartons: 1@3#, 1@12#.



Equine Back-Saver Receptor Plate Holder

Cat.# QNE207
\$275.00

- Back-Saver; no bending to keep the cassette in position (keep steady with foot and hand).
- Eliminates hand held plate/cass. hazards.
- Cassette clamps onto holder.
- Horizontal Staff stores on the base for convenience.
- Dimensions: 48" tall x 36" adj. arm.
- Shipping weight: 12 lbs.

(storage configuration)



Right Leg Position



Left Leg Position



CR/DR/Film Receptor Covers

- Allows safe handling and positioning of: CR-Receptors, Cassettes, and DR-Receptors.
- Non-sterile and disposable convenience.
- 2 mil polyethylene is transparent to x-ray.
- Keeps receptors clean and dry from exposure to urine, feces, blood, etc.

**Protect
Your
Investment!**



No Image Compromise!



Compact Dispenser Box

Standard Flip-Lip Closure

- ***Fits 23" x 25" DR-Receptors with Grids!**

cat.#	fits receptor size	quantity	price
QCCS-08	8" x 10"	1 box of 100	\$59.00
QCCS-10	8" x 10"	1 case of 500	\$268.00
QCCM-10	10" x 12"	1 box of 100	\$59.00
QCCM-12	10" x 12"	1 case of 500	\$268.00
QCCL-14	14" x 17"	1 box of 100	\$59.00
QCCL-17	14" x 17"	1 case of 500	\$268.00
QCCC-DR	17"-20" x 17"-20"	1 box of 100	\$59.00
QCCD-DR	17"-20" x 17"-20"	1 case of 500	\$268.00
QCCXL-24*	23" x 25"	1 box of 100	\$59.00
QCCXL-26*	23" x 25"	1 case of 500	\$268.00

Ziplock™ Closure



cat.#	fits receptor size	quantity	price
QCCZ-14	14" x 17"	1 box of 100	\$59.00
QCCZ-17	14" x 17"	1 case of 500	\$268.00
QCCXZ-24*	23" x 25"	1 box of 100	\$59.00
QCCXZ-26*	23" x 25"	1 case of 500	\$268.00

Animal Transporters

- Safe and easy way to transport animals.
- Flexible style rolls up for easy storage.
- Easy to clean and disinfect.



SMALL
#QATS-30
\$75.00



MEDIUM
#QATM-39
\$95.00

RUGGED CONSTRUCTION:

- Made of automotive grade reinforced vinyl.
- Buckle closures on 2" webbing straps (NO hook & loop to accumulate fur and dander!).
- Includes six (6) handles of 1" webbing.
- 1" webbing extends underneath for added strength.



LARGE
#QATL-48
\$115.00



Germicidal Wipes



SUPER SANI-CLOTH® Wipes

- Contains the highest range of effectiveness.
- Cleans, disinfects, deodorizes.
- Alcohol content: High @ 55%.
- Recommended Contact Time: 2-minutes or less.
- Popular industry choice for most **IMAGING EQUIPMENT**.
- Also recommended for **KEYBOARDS and APRONS**.
- EPA registered; meets CDC and OSHA guidelines.

cat.#	wipe size	quantity	price
QGWP-P55	6" x 6 ³ / ₄ "	tub of 160 wipes	\$12.50
QGWP-P55CS	6" x 6 ³ / ₄ "	case of 12 tubs	\$153.00
QGWP-PL55	7 ¹ / ₂ " x 15"	tub of 65 wipes	\$15.00
QGWP-PL55CS	7 ¹ / ₂ " x 15"	case of 6 tubs	\$90.00
QGWP-PW55	5" x 8"	box of 50 packets	\$14.80
QGWP-PW55CS	5" x 8"	case of 10 boxes	\$148.00
QGWP-PT55	11 ¹ / ₂ " x 11 ³ / ₄ "	box of 50 packets	\$46.00
QGWP-PT55CS	11 ¹ / ₂ " x 11 ³ / ₄ "	case of 3 boxes	\$138.00



SANI-CLOTH® AF3 Alcohol-Free Wipes

- Contains an excellent range of effectiveness.
- Cleans, disinfects, deodorizes.
- Alcohol content: ALCOHOL-FREE (less than 0.016%).
- Recommended Contact Time: 3-minutes or less.
- Commonly used to disinfect **ULTRASOUND and IMAGING EQUIPMENT**.
- EPA registered; meets CDC and OSHA guidelines.

cat.#	wipe size	quantity	price
QGWP-WAF	6" x 6 ³ / ₄ "	tub of 160 wipes	\$13.50
QGWP-WAFCS	6" x 6 ³ / ₄ "	case of 12 tubs	\$162.00
QGWP-WLAF	7 ¹ / ₂ " x 15"	tub of 65 wipes	\$16.50
QGWP-WLAFCS	7 ¹ / ₂ " x 15"	case of 6 tubs	\$99.00
QGWP-WWAF	5" x 8"	box of 50 packets	\$15.80
QGWP-WWAFCS	5" x 8"	case of 10 boxes	\$158.00
QGWP-WTAF	11 ¹ / ₂ " x 11 ³ / ₄ "	box of 50 packets	\$49.00
QGWP-WTAFCS	11 ¹ / ₂ " x 11 ³ / ₄ "	case of 3 boxes	\$147.00

	SUPER	AF		SUPER	AF		SUPER	AF
Acinetobacter baumannii	•	•	Escherichia coli (E. coli)	•	•	Pseudomonas aeruginosa	•	•
Adenovirus	•	•	Escherichia coli O157:H7 (E. coli)	•	•	Respiratory Syncytial Virus	•	•
Avian Influenza A Virus (H5N1)	•	•	Hepatitis B Virus	•	•	Rhinovirus	•	•
Burkholderia cepacia	•	•	Hepatitis C Virus	•	•	Rotavirus	•	•
Campylobacter jejuni	•	•	Herpes Simplex Virus, Type 2	•	•	Salmonella enterica	•	•
Candida albicans	•	•	HIV-1 (Aids Virus)	•	•	(formerly Salmonella choleraesius)	•	•
Comm. Acquired Methicillin Resistant Staphylococcus aureus (CA-MRSA) Genotype USA300	•	•	Human Coronavirus	•	•	Staphylococcus aureus	•	•
Comm. Acquired Methicillin Resistant Staphylococcus aureus (CA-MRSA) Genotype USA400	•	•	Pandemic 2009 H1N1 Influenza A Virus	•	•	Streptococcus pyogenes	•	•
ESBL Producing Escherichia coli (E. coli)	•	•	Influenza A2 / Hong Kong Virus	•	•	TB (Mycobacterium bovis)	•	•
			Klebsiella pneumoniae	•	•	Vaccinia Virus	•	•
			Listeria monocytogenes	•	•	Vancomycin Resistant Enterococcus (VRE)	•	•
			Methicillin Resistant Staphylococcus aureus (MRSA)	•	•			

(Technical bulletin available for further entries.)



T-Spray II™

#QPDC-507
\$114.00 / case

- Clean & disinfect all types of equipment.
- Safe for transducers, probes, etc.
- Contains NO alcohol, phenol or glutaraldehyde.
- Effective bactericide, fungicide, & virucide.
- **Kills MRSA, Avian Flu & HIV-1.**
- Concentrated; just add water.
- 250ml bottles (1-dozen per case).

SANI-CLOTH® Personal Hand Wipes

#QGWP-B65
\$15.75/each tub
Save on shipping:
#QGWP-B65CS
\$94.50/case of 6 tubs



- Kills 99.99% of germs on hands.
- 65.9% alcohol content (effective against MRSA).
- Wipes remove soil; gels alone do not.
- 220 pre-moistened wipes clean & sanitize hands.

Silk Screened Signs

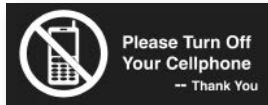
- All signs are constructed of 1/8" thick Trovicel™.
- Double-faced tape is attached to the back of each sign for mounting.
- Large Signs are 8" x 10".
- Small Signs are 4" x 10".



#QCRE-18 \$13.00



#QCRA-17 \$13.00



#QNCP-24B \$13.00



#QNCP-24R \$13.00



#QCXR-13EB \$13.00



#QCXR-13ER \$13.00



#QXRR-19B \$13.00



#QXRR-19R \$13.00



#QCDK-11B \$13.00



#QCDK-11R \$13.00



#QCRA-15 \$19.00



Cat.# QNPV-09E \$19.00



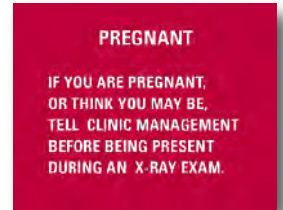
#QNFD-22B \$19.00



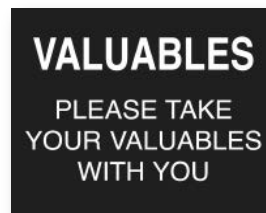
#QNFD-22R \$19.00



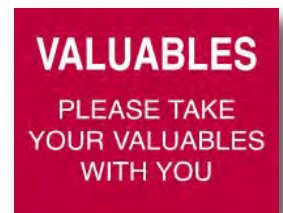
#QPS-06EB \$19.00



#QPS-06ER \$19.00



#QVS-10EB \$19.00



#QVS-10ER \$19.00

Custom Engraved Signs

- Engraved 1/16" thick Rowmark™.
- Stock colors: White letters in Red plate, White letters in Black plate, Red letters in Yellow plate.
- Double-faced tape attached to the back for mounting.
- Letters and numbers only; no symbols.
- Other unusual sizes and styles available for quote.

Example: 5" x 9" = 45 sq. in.

#QSI-48 @ \$32.00



Example Sign

size	cat.#	price
48 sq. inches or less	QSI-48	\$32.00
over 48 sq. in. and up to 144 sq. in.	QSI-144	\$38.00

Radiation Badge Storage Boards

- Provides a central location for all badge related activity.
- Exposure record display area and note clip.
- Accommodates different styles and sizes of badges.
- Ring board is also available for Nuclear Medicine and PET.



NARROW BADGES less than 1" wide



#QFB-10N



#QFB-20N

SQUARE, HEX, WIDE, OBLONG BADGES 1" to 2" wide

cat.#	style	badges	board size	price
QFB-10N	rectangle	10	12" x 5"	\$79.00
QFB-20N	rectangle	20	12" x 9 1/4"	\$87.00
QFB-10W	square/hex	10	12" x 9 1/4"	\$105.00
QFB-20W	square/hex	20	12" x 18"	\$135.00



#QFB-10W

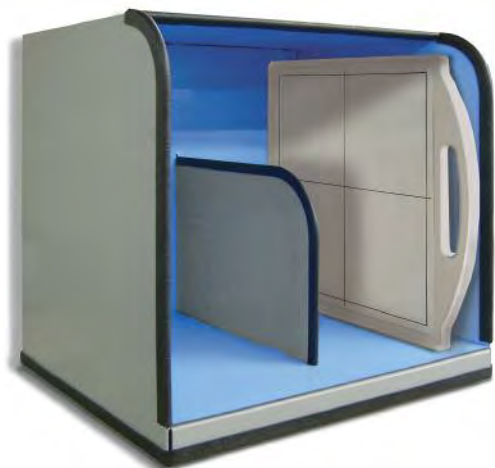


#QFB-20W



Lead-Lined Table-Top Bin

- Store multiple receptors without worry of scatter radiation.
- 14-gauge welded steel construction with vinyl-lead lining.
- Provides 1.0mm Pb Equivalency shielding from scatter.
- Bumper guards protect receptors from impact damage.
- Opening is 16"w x 19"d x 20"h.



Lead-Lined with shielded body.

#QCPH-LL12
\$1495.00

Unit above with shielded door:
#QCPH-LD12
\$1995.00

Caliper

Cat.# QCAL-21
\$57.00



- Accurately measure body thickness to be x-rayed.
- Calibrated in both in. and cm.
- Made of durable aluminum.
- 1" wide x 21 1/4" tall w/ 10 1/8" leg.
- Ships @ 1 lb.



**Spin-Lift
Adjustable
Stool
5-Leg**

#QBAS-40
\$249.00



- Solid steel, machined thread screw adjusts height by rotation of the stool cushion.
- Adjustable height: 17¹/₄" to 21³/₄".
- 16" x 4" thick seat cushion.
- 5-leg, die cast aluminum base.
- 23" base provides excellent stability.
- Weight: 21 lbs.; Ships @ 30 lbs.

**Spin-Lift
Adjustable
Stool
4-Leg**

#QBAS-30
\$199.00



- Solid steel, machined screw adjusts height by rotation of the stool cushion.
- Adjustable height: 18" to 24¹/₂".
- 14¹/₂" x 4" thick seat cushion.
- 4-leg chrome steel base with footring.
- Weight: 20 lbs.; Ships @ 30 lbs.

**Pneumatic
Lift
Stool**

#QBPS-20
\$299.00



- Pneumatic gas cylinder easily adjusts height with convenient under-cushion ring.
- Adjustable height: 17¹/₂" to 22¹/₂".
- 16" x 4" thick seat cushion.
- 5-leg, die cast aluminum base.
- 23" base provides excellent stability.
- Weight: 20 lbs.; Ships @ 30 lbs.

**Pneumatic
Lift
Stool
with
Backrest**

#QBPS-22
\$389.00

(BPS-20 with adjustable backrest and D-ring height lever)



Instrument Stands

- Provides ready access to equipment or instruments.
- Leg posts are 1" chrome plated steel.
- Steel, easy-slide extension posts.
- Stainless steel tray is 12" x 19" x 3/4" deep.



Tableside

#QBMS-80
\$235.00
Ht: 34"-54"
Ships @ 19 lbs.



Mobile

#QBMS-95
\$225.00
Ht: 31"-50"
Ships @ 17 lbs.
in two boxes

Step Stool with Handrail

#QBSH-65
\$99.00

- All steel 350 lb. capacity.
- Skid resistant black mat.
- 9" high stool with 11" x 13³/₄" top; 34" tall with handrail.
- Handrail is 7/8" dia. chrome-plated tubular steel.
- Easy assembly.
- Shipping weight: stool 8 lbs.; handrail 4 lbs.



Step Stool No Handrail

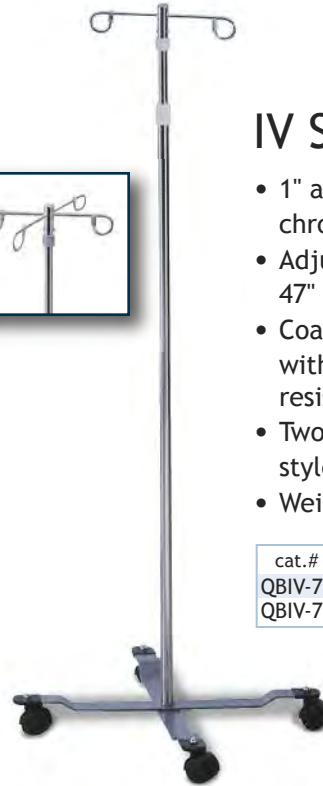
#QBSS-60
\$67.00

- Similar to stool with BSH-65.
- NO HOLES for handrail.
- Shipping weight: 8 lbs.



IV Stands

- 1" and 7/8" telescoping, chromed steel tubes.
- Adjustable height range: 47" to 84"; Twist Lock.
- Coated, bar steel base with scuff guard tips resists corrosives.
- Two or four rams-horn style IV hooks.
- Weight: 17 lbs.



cat.#	description	price
QBIV-70	2-hook iv pole	\$99.00
QBIV-75	4-hook iv pole	\$186.00

Standard Exam Lamp



#QBEL-95
\$165.00



#QBEL-90
\$155.00



Inner shade keeps outer shade cool

- Flexible gooseneck arm with 360° adjustable steel shade.
- Chrome steel stand has adjustable height range: 50" to 74".
- Uses one 60-watt incandescent bulb (not included).
- Weighted stationery base or 23" diameter mobile base.
- Weight: 7 lbs.

Halogen Exam Lamp



#QBEH-93
\$412.00



Heat sink technology keeps light housing cool



#QBEH-91
\$335.00

- Flexible gooseneck arm with 540° adjustable head.
- Beige enamel coated steel stand is adjustable to 65¹/₂".
- Uses one high intensity 35-watt halogen lamp (incl.).
- 1500 Footcandles @ 24"; 3000° Kelvin.
- Weighted stationery base or 18" diameter mobile base.

- Elite markers have the most DURABLE aluminum casing.
- RED for "R" markers and misc. words / BLUE for "L" markers.
- Provides the best in QC!
- Identifier markers have high-impact polystyrene casing.
- Enhances quality control with fewer repeat exams.
- Provides basic, yet personalized image identification.



Elite Style

#Q1E \$20.00 ea. set
R & L - 5/8"
2 initials - 3/8" or 3 initials - 1/4"
Without initials, order:
#Q4E @ \$12.80/set



#Q7E \$23.00 ea. set
R & L - 1"
2 initials - 3/8" or 3 initials - 1/4"
Without initials, order:
#Q5E @ \$14.70/set



Identifier Style

#QTA-1 \$18.00 ea. set
R & L - 5/8"
2 initials - 3/8" or 3 initials - 1/4"
Without initials, order:
#QTA-4 @ \$11.40/set



#QTA-7 \$22.00 ea. set
R & L - 1"
2 initials - 3/8" or 3 initials - 1/4"
Without initials, order:
#QTA-5 @ \$12.30/set

Beads Indicate Patient Position



#QTA-13 \$30.00 ea. set
Elite Style R & L - 5/8"
2 initials - 3/8" or 3 initials - 1/4"



#QTA-14 \$25.00 ea. set
Elite Style R & L - 5/8"
No initials

Position Indicators



#QTA-16 \$30.00 ea. set
Identifier Style R & L - 7/8" Position
No initials

Personal Touch Shapes



TROPICAL FISH
 #QPT-FRB \$20.00 ea. set
 R & L - 5/8"
 2 initials - 3/8" or 3 initials - 1/4"



SKULLS
 #QPT-SKW \$20.00 ea. set
 R & L - 5/8"
 2 initials - 3/8" or 3 initials - 1/4"



#QTA-002 \$18.00 ea. set
 R & L - 5/8" with 2 initials - 3/8" or 3 initials - 1/4"
 Without initials, order: #QTA-001 @ \$11.40/set



#QA-3 \$7.50 each
 Elite Arrow - 1"



#QTA-A3 \$5.70 each
 Identifier Arrow - 1"

Word Markers



1/2" Elite Shown



Individual ELITE Words

(aluminum casing)

description	example	cat.# (3/8") price	cat.# (1/2") price
single letter	3	Q2E-Y \$7.50	Q2E-Z \$8.50
2-3 letters	EXT	Q3E-Y \$10.00	Q3E-Z \$12.50
4-5 letters	DMPLO	Q4E-Y \$12.50	Q4E-Z \$15.50
6-7 letters	FLEXION	Q5E-Y \$14.00	Q5E-Z \$17.50
8+ letters	PORTABLE	Q6E-Y \$16.00	Q6E-Z \$20.00



Individual IDENTIFIER Words

(polystyrene plastic casing)

description	example	cat.# (3/8") price	cat.# (1/2") price
single letter	3	Q2TA-Y \$5.50	Q2TA-Z \$6.50
2-3 letters	EXT	Q3TA-Y \$9.50	Q3TA-Z \$10.00
4-5 letters	DMPLO	Q4TA-Y \$11.00	Q4TA-Z \$11.50
6-7 letters	FLEXION	Q5TA-Y \$12.00	Q5TA-Z \$14.00
8-15 / 8-10	PORTABLE	Q6TA-Y \$15.00	Q6TA-Z \$17.00

Wall Boards

- Ideal marker storage.
- Dark walnut grain.
- 3/4" brass hooks.



description	cat.#	price
50 Hook Board	QHK-50	\$129.00
32 Hook Board	QHK-32	\$98.00
16 Hook Board	QHK-16	\$78.00
8 Hook Board	QHK-8	\$69.00

Personal Touch Glitter



WOW! Bright, shiny objects!



RED/BLUE GLITTER
 #QPT-GR \$18.00 ea. set
 R & L - 5/8"
 2 initials - 3/8" or 3 initials - 1/4"



PURPLE GLITTER
 #QPT-GP \$18.00 ea. set
 R & L - 5/8"
 2 initials - 3/8" or 3 initials - 1/4"



YELLOW GLITTER
 #QPT-GY \$18.00 ea. set
 R & L - 5/8"
 2 initials - 3/8" or 3 initials - 1/4"



BURNT SIENNA GLITTER
 #QPT-GS \$18.00 ea. set
 R & L - 5/8"
 2 initials - 3/8" or 3 initials - 1/4"



GREEN GLITTER
 #QPT-GG \$18.00 ea. set
 R & L - 5/8"
 2 initials - 3/8" or 3 initials - 1/4"



ORANGE GLITTER
 #QPT-GO \$18.00 ea. set
 R & L - 5/8"
 2 initials - 3/8" or 3 initials - 1/4"

Personal Touch Tie-Dye



RED/BLUE/PURPLE TIE-DYE
 #QPT-TR \$18.00 ea. set
 R & L - 5/8"
 2 initials - 3/8" or 3 initials - 1/4"



YELLOW/RED/ORANGE TIE-DYE
 #QPT-TY \$18.00 ea. set
 R & L - 5/8"
 2 initials - 3/8" or 3 initials - 1/4"



BLUE/YELLOW/GREEN TIE-DYE
 #QPT-TB \$18.00 ea. set
 R & L - 5/8"
 2 initials - 3/8" or 3 initials - 1/4"

Wafer Thin



#QWTS-1 \$29.00 ea.set
R & L - 3/8" 2 initials - 3/16"
Without initials, order:
#WTS-4 @ \$19.00/set



#QWTS-6B \$29.00 ea.set
R & L - 3/8" 2 initials - 3/16"
Without initials, order:
#WTS-6A @ \$19.00/set



QWTW-A3 (1/2" arrow) \$9.00



Example of QWTW-45 (1/4" letters)

Super Thin for Slim Bucky Clearance

- Perfect for newer equipment (CR, DR, etc.) with very thin bucky clearance.
- Exceptionally thin markers: <math>< 3/32''</math> (2mm).
- Copper filtered for a broad range of KV.
- Elite style and color-coded.

description	cat.#	price
single letter	QWTW-01	\$14.00
2-3 letters	QWTW-23	\$16.00
4-5 letters	QWTW-45	\$18.00
6-7 letters	QWTW-67	\$20.00
8+ letters	QWTW-80	\$22.00

Wafer Thin Words

Stencil Clip

#QXSCP-10
\$15.00 ea.
Plated Steel
Double Clipper.
Stenciled R & L.



Great for Slim Bucky Clearance

Standard Thin Clipper

- Constructed of high strength Kydex™.
- Extra thin profile, double-sided, 1 7/8" wide.
- R and L: 3/4", with or without initials.
- 2 Initials: 3/8"; 3 initials or words: 1/4".

#QCPP-40
\$25.00 ea.



Side View



Gridcap Thin Clipper

- Designed to fit DR, CR receptors with gridcap.
- Constructed of high strength Kydex™.
- Extra thin profile, double-sided, 1 7/8" wide.
- R and L: 3/4", with or without initials.
- 2 Initials: 3/8"; 3 initials: 1/4".

#QCPP-60 (with initials)
#QCPP-61 (no initials)
\$35.00 ea.

NEW for Gridcaps



Cover Tab Stickers

- Ideal for coding mismarked or unmarked film.
- Color coded: L-Blue / R-Red.
- Self-adhesive backing.
- 1 1/4" diameter with square for initials.
- Available in greater quantity discounts!

cat.#	1-3 boxes	4-9 boxes	10+boxes
QTAB-R	\$22.00	\$16.00	\$14.00
QTAB-L	\$22.00	\$16.00	\$14.00



250
Stickers
per box



Take Advantage of
Quantity Discounts!

Marking Pens

- Highlights points of interest on a film.
- Wax markers resist smudging, but are not permanent.
- NOT to be used in place of lead markers.
- NOT a legally acceptable marking method.



Example of the
QMPA-19
Assorted Pack



Order each item per number of packs.

Example: 2ea. #QMPY-11
(will be shipped with 10 yellow pens.)

PENS (5 per pack)

color	cat.#	price/pk
Yellow	QMPY-11	\$30.00/pk
Red	QMPR-12	\$30.00/pk
White	QMPW-13	\$30.00/pk
2-Y, 2-R, 1-W	QMPA-19	\$30.00/pk

REFILLS (72 per pack)

color	cat.#	price/pk
Yellow	QMRY-21	\$20.00/pk
Red	QMRR-22	\$20.00/pk
White	QMRW-23	\$20.00/pk

Refills come in pkgs of 72 pieces.

Radi-O-Paque Rulers

45cm

#QCPT-R45
\$175.00/ea.

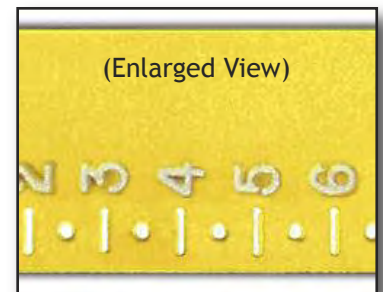


115cm

#QCPT-R115
\$275.00/ea.



- Sturdy 1 1/4" wide x 1/8" thick.
- High density lead letters.
- Brilliant YELLOW color.
- Spaced in 0.5cm increments.



Marker Keeper

- Convenient four-pouch vinyl holder for markers.
- Handy clip attaches the Marker Keeper to belt, lapel, pocket, etc.
- Keeps markers in easy reach for quick retrieval.



color	cat.#	price
Red	QMKR-11	\$9.90
True Blue	QMKB-12	\$9.90
Green	QMKG-13	\$9.90
Yellow	QMKY-14	\$9.90
Clear	QMKC-15	\$9.90
*Assorted (4)	QMKA-19	\$35.00

(*Assorted set does NOT include Clear.)



CHOOSE YOUR
OWN COLOR!

A tool pouch for your markers!

Veri-Thin Legal

Cat.# QXSVL-21 \$48.00 ea.
Holder only. 1¹³/₁₆" x 3¹/₂"

Double aluminum channels;
imprint down and in between
the two channels.

Great for
Bucky Trays!



Cat.# QXSVL-22 \$120.00 set
Complete Set Includes:

- 1ea. holder
- 2ea. A-Z
- 4ea. 0-9
- 2ea. A, E, I, O, U
- 1ea. 36-letter case

(Replacement characters:
3³/₁₆" on 5⁵/₈" plastic tabs.
Reorder #QXTSF-3658)

Perfection

Cat.# QXSVA-11 \$44.00 ea.
Holder only. 1¹/₈" x 3¹/₂"

Single aluminum channel;
imprint above and below
the channel.



Cat.# QXSVA-12 \$99.00 set
Complete Set Includes:

- 1ea. holder
- 2ea. R, L
- 4ea. 0-9
- 1ea. 36-letter case

(Replacement characters:
3³/₁₆" on 5⁵/₈" plastic tabs.
Reorder #QXTSF-3658)

Individual Characters (Flat Face)



Cat.#	Lead/Plastic Size	Price	Comments
QXTSF-3658	3 ³ / ₁₆ " on 5 ⁵ / ₈ "	.79	Fits: Veri-Thin Style Holders
QXTUF-36	3 ³ / ₁₆ "	.49	Unmounted Letter or Number
QXTUF-14	1 ¹ / ₄ "	.49	Unmounted Letter or Number
QXTUF-12	1 ¹ / ₂ "	.59	Unmounted Letter or Number
QXTUF-01	1"	.99	Unmounted R or L only
QXTUA-12	1 ¹ / ₂ "	.79	Unmounted Arrow
QXTUA-01	1"	.99	Unmounted Arrow

Lead Letter Case



Cat.# QXSLC-36
\$40.00

- Injection Molded Box.
- 36 scoop-bottom compartments
(for A-Z and 0-9).
- Side compartment for holder.

Permanent Imprints

- Permanent, engraved facility ID marker.
- Aluminum-backed, high-density 1/4" lead letters.
- Velcro on the back.



Cat.# QPI-2 Two (2) line imprint \$39.00



Cat.# QPI-3 Three (3) line imprint \$49.00

X-Ray Film Copier



#Q195D
\$725.00

- Compact design uses less counter space; single UV lamp.
- FLAT GLASS contact surface - extremely easy to use.
- Non-rigid, floppy lid contours to film for excellent contact.
- Electronic timer with automatic reset.
- All metal housing.
- 18" w x 15" d x 12" h
- 110 VAC standard
- 1 year warranty (excl. glass & bulbs)
- Shipping weight: 31 lbs.

Copy 14" x 17" Film
with
NO Moving Parts!



EASY! Place the original film and the copy film on the glass. Then, press "expose" and run through any standard processor.

Standard Copier Cart

#QUC-70
\$275.00

- Copier transport cart. Also for sponges, linens, accessory items, etc.
- Unassembled.
- 25" x 19" x 30" h.
- Shipping weight: 36 lbs.



Safe-Spot Safelight

- Adjustable swivel & pivot base.
- Safe for high speed film.
- Filter is GBX-2 compatible
- Pull chain switch.
- 15-watt incandescent lamp.
- Shipping weight: 3 lbs.



safe-spot
#QSSP-15
\$179.00

Fluoro-Safelight

- Ceiling or wall mount.
- 15-watt, 18" fluorescent lamp.
- Blue/Green film type filter will not dry or crack with age.
- Pull chain switch and 6 foot power cord.
- Shipping weight: 8 lbs.

fluorescent safelight
single lamp model
#QSL-15 \$225.00



Viewboxes

- Illuminators or "view boxes" are the ideal light source for the proper diagnosis and interpretation of x-ray radiographs.
- High quality, cost effective and can be mounted virtually anywhere.
- Provides the right conditions for efficient film reading.



single bank
Cat.# QVBS-10
\$209.00

14" w x 3 1/2" d x 21 3/4" h
Shipping wt: 17 lbs.



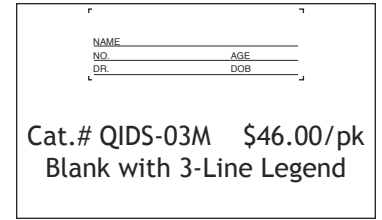
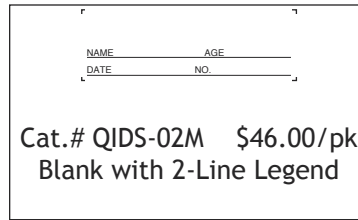
double bank
Cat.# QVBD-20
\$399.00

28" w x 3 1/2" d x 21 3/4" h
Shipping wt: 34 lbs.

- Upper and Lower Film Grips.
- Includes two 15-watt fluorescent lamps.
- Stand alone or wall mount.
- 6 foot cord and UL listed.

I.D. Cards - Standard

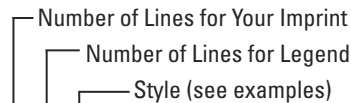
- Standard Cards measure 3" x 5".
- Each card is imprinted with standard legend.
- Each pack contains 1,000 cards.
- Shipped from stock.



I.D. Cards - Custom

- Custom Cards measure 3" x 5" with 1" x 3" imprint window.
- Each card is imprinted with:
 - Your Custom Imprint (0, 1, 2 or 3 lines);
 - Custom Legend (0, 1, 2 or 3 lines);
 (if not specified, standard legend will be used).
- Each pack contains 1,000 cards.

CUSTOM
CARD
BUILDER



Cat.# QIDC-
0 0 M
1 1 C
2 2 D

style	imprint location	1000 cards	5000 cards	(When ordering, faxed diagram is most helpful.)
M	Middle Top	\$55.00/M	\$49.00/M	
C	Top Corner	\$55.00/M	\$49.00/M	
D	Double Middle	\$63.00/M	\$57.00/M	
Q	GE or Kodak (compatible)	\$65.00/M	\$59.00/M	

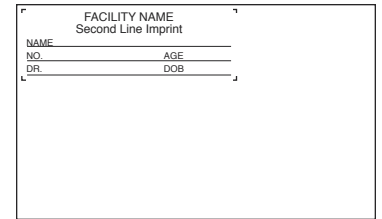


Artwork may not be an exact match to that of other suppliers.

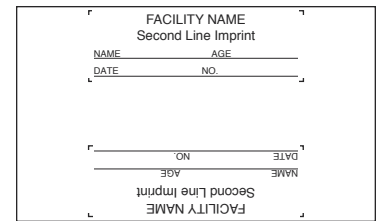
Custom Cards are non-returnable.

If not specified, standard legend will be used.

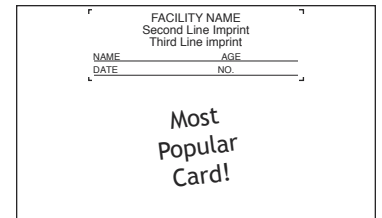
Example: Cat.# QIDC-23C



Example: Cat.# QIDC-22D



Example: Cat.# QIDC-32M



I.D. Printer

#QIDP-33
\$315.00

- Fully automatic exposure for perfect image prints.
- Adjustable exposure timer for most film types.
- Film positioning guides for middle or corner ID cards.
- Durable, all-metal housing.
- Plug-in model only; 110/120 VAC.
- 8" w x 8" d x 3" h.
- Shipping weight: 6 lbs.



Special Size Cabinets

- Same specs as the Standard Cabinets on pages 35.
- STACKABLE (secures with nuts & bolts).
- Specify: Base Unit (w/ dustplate) or Stacker (no dustplate). (Base unit is 3" taller than a Stacker.)
- 24" & 48" wide cabinets are available.

Special Sizes ship:



Q632XST with locking DOORS!



Cat.# Q631XST*

Cat.# Q632XST

Cat.# Q633XST

Cat.# Q634XST

Cat.# QDR632XST

36" x 18" x 36"
\$795.00 Ships @ 170 lbs.

Cat.#	Tier	w x d x h (in.)	Ships @	1-4	5-9	10-19	20+
Q631XST	1	36x18x20*	77#	\$222.00	\$215.00	\$213.00	\$208.00
Q632XST	2	36x18x36	115#	\$420.00	\$411.00	\$404.00	\$393.00
Q633XST	3	36x18x52	165#	\$549.00	\$536.00	\$524.00	\$514.00
Q634XST	4	36x18x68	212#	\$645.00	\$633.00	\$619.00	\$607.00

***IMPORTANT NOTE about Bases and Stackers:**

All units are shipped as Base Units which include a 3" dustplate, with the exception of the Q621XST, Q631XST, Q641XST single-tier units, which are shipped as Stackers at 17" tall without a dustplate, unless a Base Unit at 20" tall is specified.

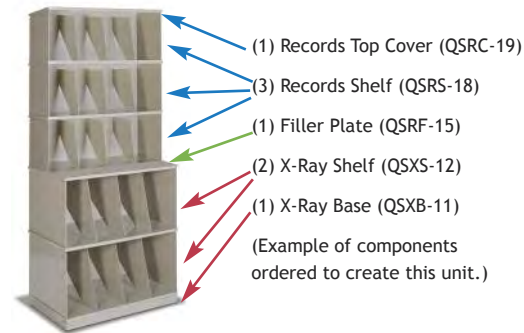
- Only available on the Q632XST.
- Flush-mounted paddle handles.
- Locks offer attractive security.
- Heavy duty construction.

Stackable Cabinets

Ideal for facilities with limited receiving areas



Order only the size you need and the components you want.
Easy assembly: Stack the rack and file your films & files.



cat.#	description	price
QSXC-13	X-Ray Top Cover	\$48.00
QXSX-12	X-Ray Shelf (1-tier)	\$184.00
QXSB-11	X-Ray Base	\$87.00
QXSD-14	X-Ray Door (1-tier)	\$357.00

cat.#	description	price
QSRC-19	Records Top Cover	\$48.00
QSRF-18	Records Shelf (1-tier)	\$158.00
QSRB-17	Records Base	\$80.00

cat.#	description	price
QSRF-15	X-Ray-to-Records Filler	\$28.00

x-ray stackables (per tier)

- Holds folders for 14x17 film.
- Shelf: 32"w x 19"d x 16 1/2"h., 38(70)lbs.
- Shelf vertical clearance: 15 1/8".
- 2" tall Base: 7 lbs.

records stackables (per tier)

- Holds medical records & mammo film.
- Shelf: 32"w x 12"d x 12 5/8"h., 23 lbs.
- Shelf vertical clearance: 11 1/4".
- 2" tall Base: 6 lbs.

filler plate

- When a record-size shelf is placed on top of an x-ray-size shelf, this results in a 7" gap. This filler plate "fills the gap" to create a complete shelf where the two sizes meet.
- Stackables are available in four colors: putty, twilight, black, blue.

Techno-Tuff™ X-Ray Filing Cabinets

Fully assembled, tough, and versatile.



#Q608A



#Q618A



#Q628A

- Aesthetic design is suitable for outer offices and file rooms.
- All steel nut & bolt construction offers maximum strength.
- Solid back and side panels for security.
- Available in eight (8) colors (see color chart).
- Narrow compartments: dividers are 6" apart.
- 15³/₈" vertical shelf clearance.
- 12-gauge corner posts for maximum vertical strength.
- Full height dividers add vertical strength and stability.

cat.#	w x d x h (in.)	ships @	1-4	5-9	10-19	20+
Q608A	24x18x84	188#	\$589.00	\$583.00	\$577.00	\$567.00
Q618A	36x18x84	238#	\$699.00	\$689.00	\$679.00	\$659.00
Q628A	48x18x84	295#	\$932.00	\$923.00	\$904.00	\$885.00

Fully Assembled Records Cabinets



QMMU-4881 shown

- Specifically designed for 10" x 12" records.
- Seven shelves (six openings).
- 3 dividers per shelf on 36" unit, 4 dividers per shelf on 48" unit.
- All steel nut-bolt construction.
- Assembled and ready to use.
- Solid back and side panels.
- 11³/₄" vertical shelf clearance.



Cat.#	w x d x h (in.)	Ships @	price
QMMU-3681	36x12x81	162#	\$605.00
QMMU-4881	48x12x81	198#	\$735.00

Paint Selection Chart for Cabinets & Carts

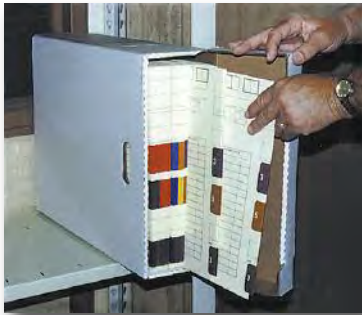
Standard Paint	Custom Paint (non-returnable)
Almond (default)	Black
Putty	White
Twilight	Blue
Gray	Rose

SPECIAL NOTE ABOUT MOTOR FREIGHT:

Please provide information about your receiving area to determine standard or special delivery requirements. Motor freight companies will not unload shipments to accounts who do not have a commercial height receiving dock. In most other circumstances, however, special arrangements can be made available at a reasonable extra freight charge.

E-Z X-Ray Storage Boxes

- Allows for the efficient storage of x-ray film files.
(Sold in case lots.)
- Strong and durable with reinforced handles.
- One piece, easy fold assembly.
- Can be stacked without crushing.
- Ideal for archiving files, temporary storage, or moving files.



- Accommodates jackets up to 14" x 17".
- Upright: lid opens up.
Side down: lid opens forward.
(printed legend provided both ways.)
- Sized for OSHA lift load capacity.
- Each box O.D.: 6 1/4" x 16" x 19 1/2".
- Ships as 30 lbs. per case.
6 cases or less via FedEx/UPS.
7+ cases via motor freight.



Horizontal Filing



Vertical Filing

Cat.#QETX-70
(15 boxes per case)

# cases	price per case
1-3	\$129.00
4-7	\$124.00
8-15	\$119.00
16-49	\$114.00
50+	\$109.00

Wall Bin

- Extremely durable steel and polycarbonate construction.
- Will hold CR plates, cassettes, film jackets, and caddies.
- Includes a convenient message clip.
- Opening is 22"w x 5"d x 14"h.



#Q80AC
\$299.00

Overall size:
22"w x 5 3/8"d x 22"h
Shipping weight:
25 lbs.

Chart, Folder or Film Holder

- Steel backboard and base (open sides).
- Smoked clear polycarbonate front.
- Includes a convenient message clip.
- Rubber mat in base to keep folders from sliding.
- Used for charts, folders, caddies, film, etc.



#Q89AC
\$111.00/ea.

14"w x 3"d x 12"h.
Shipping: 8 lbs.

Multi-use Portfolio

#QFPM-22 \$90.00



*Features
three inside
pockets and
a clear front
pouch!*

- Perfect for large files or film.
- Clear front pouch for notes, chain-of-custody, cd/dvd, etc.
- Three inner pouches to separate items and files.
- Durable, reinforced vinyl.
- 3-point hook & loop closure and dual handles.
- Comes in black (default), blue, red, green or yellow.
- Overall size: 22" x 17".
- Shipping weight: 3 lbs.



Protect your investment!

"CRC" CR-Plate Units have special, *impact resistant padding* on shelves and vertical surfaces to *prevent damage* to expensive CR-Plates.

Tall CR-Receptor Cart



#QCRC-38 \$795.00

- Eight 6" wide compartments @ 16 1/2" vertical clearance.
- Nominal size: 24" x 18" x 42 1/2"h.
- Shipping weight: 130 lbs.



All CRC Units ship:



Paint Color Chart is on p.41.

Mini CR-Receptor Cart



#QCRC-24 \$795.00

- Four 6" wide compartments @ 16 1/2" vert. clearance.
- Nominal size: 24" x 18" x 36"h.
- Shipping weight: 100 lbs.

Slim Line Two-Tier

#QSL-1
\$850.00

- 14-gauge welded steel.
- Two dividers per slanted shelf on 6 1/2" centers.
- Lower divided shelf has a 15 3/4" vertical clearance.
- 5" plate casters (2 locking).
- Nominal size: 20"w x 17"d x 49"h.
- Shipping weight: 141 lbs.



Standard Utility Cart

#QUC-70
\$275.00

- All-purpose utility cart. Ideal for sponges, linens, accessory items, etc.
- 150 pound capacity.
- Unassembled.
- 25" x 19" x 30"h.
- Shipping weight: 36 lbs.



- Allows handling of files without damage to film or jacket.
- Heavy gauge vinyl welded together with heat-seal construction.
- Keeps records and film in one convenient location.
- Sealed chipboard insert for rigidity.



Standard Organizers

- Ideal for transport / retrieval protection.
- 2-pocket design for files and jackets.
- Holds up to 14" x 17" film.
- Available in ten (10) colors.
- Cardboard insert for rigid construction.*
- Aids in increased filing efficiency.
- Overall size: 21" x 14 1/2".

cat.#	color	qty./ctn	1-4 ctns	5-9 ctns	10-19 ctns	20+ ctns
Q800	True Blue	20	\$136.00	\$129.00	\$124.00	\$116.00
Q810	Red	20	\$136.00	\$129.00	\$124.00	\$116.00
Q820	Yellow	20	\$136.00	\$129.00	\$124.00	\$116.00
Q830	Green	20	\$136.00	\$129.00	\$124.00	\$116.00
Q840	Purple	20	\$136.00	\$129.00	\$124.00	\$116.00
Q850*	Clear*	20	\$136.00	\$129.00	\$124.00	\$116.00
Q860	Teal	20	\$136.00	\$129.00	\$124.00	\$116.00
Q870	Maroon	20	\$136.00	\$129.00	\$124.00	\$116.00
Q880	Royal Blue	20	\$136.00	\$129.00	\$124.00	\$116.00
Q890	Orange	20	\$136.00	\$129.00	\$124.00	\$116.00

*(CLEAR caddies are flexible and do NOT have cardboard inserts.)

Negative Preservers

- Available in three sizes to accommodate all films.
- All include stock copy lines for: file number, name, date, doctor and remarks.
- Made of 32lb. gold kraft stock.
- Thumbcut for easy access to films.
- Open end (opens along short side edge).
- Red and green available in large size, upon request.

cat.#	size	qty./ctn	wt./ctn	1-7 ctns	8-14 ctns	15+ ctns
QJNS-OEK	8.5 x 10.5	500	25#	\$115.00	\$112.00	\$107.00
QJNM-OEK	10.5 x 12.5	500	25#	\$139.00	\$134.00	\$128.00
QJNL-OEK	14.5 x 17.5	250	22#	\$88.00	\$85.00	\$82.00

- With 1" Expansion Gusset

cat.#	size	qty./ctn	wt./ctn	1-7 ctns	8-14 ctns	15+ ctns
QJNL-OEX	14.5 x 17.5	100	15#	\$232.00	\$225.00	\$217.00



Standard X-Ray Film Jacket



- Single pocket x-ray jacket made of 11pt manila stock.
- Non color-coded (see sticker styles and colors).
- Size: 14 1/2" x 18 1/4", including 3/4" scored self expansion.
- Black ink copy includes blocks for color-code labels and black loan indicator.
- Offset double thumbcut for easy access to contents.
- Opens along upper edge.

cat.#	qty./ctn	wt./ctn	1-9 ctns	10-24 ctns	25+ ctns
QJL-SPS	100	22#	\$83.00	\$80.00	\$76.00

Color-Code Labels

- Permanent adhesive with release coated paper backing.
- Superior flexibility for long life.
- Other color systems available.

Digit	Color
0	red
1	gray
2	blue
3	orange
4	purple
5	black
6	yellow
7	brown
8	pink
9	green

(shown actual size: 1 3/4" x 1 1/2")



small year labels

cat.#	year/color	qty./ctn	1-9 ctns	10-24 ctns	25+ ctns
QJLS-Y12	12/blue	1000/rl	\$12.60	\$10.50	\$8.40
QJLS-Y13	13/orange	1000/rl	\$12.60	\$10.50	\$8.40
QJLS-Y14	14/purple	1000/rl	\$12.60	\$10.50	\$8.40
QJLS-Y15	15/black	1000/rl	\$12.60	\$10.50	\$8.40

Cardboard Insert Mailers

- Available in two sizes.
- Made of 32lb. brown kraft stock.
- Open end, string & button closure.
- Chipboard insert for rigidity.
- Printed with bold black stock copy.

cat.#	size (inches)	qty./ctn	wt./ctn	1-9 ctns	10-19 ctns	20+ ctns
QJMM-SBC	11 x 13	50	8#	\$53.00	\$51.00	\$49.00
QJML-SBC	15 x 18	50	12#	\$60.00	\$58.00	\$55.00



CD/DVD Sleeves

- Standard 5" x 5" CD/DVD protectio sleeves.
- Made of 60lb. white offset paper stock.
- Window made of clear polyester.

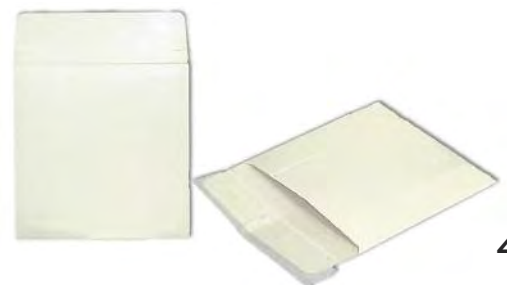
cat.#	qty./ctn	wt./ctn	1-7 ctns	8-14 ctns	15+ ctns
QJCD-CSW	1000	14#	\$115.00	\$109.00	\$104.00



CD/DVD Mailers

- Features self-adhesive closure and tear-tape tab opening.
- Made of 20pt. coated white board.
- Economy; no liner.

cat.#	qty./ctn	wt./ctn	1-7 ctns	8-14 ctns	15+ ctns
QJCD-CDX	250	15#	\$83.00	\$78.00	\$73.00



Mobile & Wall Mount Workstations

- Double-jointed extendable arms.
- Track-slide height adjustment.
- Ask about our *pre-assembly program!*

MOBILE WORKSTATION:
 1-intergrated workstation
 1-steel post (total ht.: 67")
 1-stablizer H-base
 1-cable channel
 4-locking casters

WALL MOUNT WORKSTATION:
 1-31½" wall mount vertical track
 1-extension arm keyboard tray
 1-75mm/100mm VESA extend-mount
 [Models with CPU Holder include an additional track for 63" total height.]



Single View Workstation

MOBILE
 #ZTMW-ES21
 \$1145.00



WALL MOUNT
 #ZEVW-ES21
 \$700.00



Dual View Workstation

MOBILE
 #ZTMW-ES22
 \$1270.00



WALL MOUNT
 #ZEVW-ES22
 \$850.00



Single View Workstation w/CPU

MOBILE
 #ZTMW-ET31
 \$1355.00



WALL MOUNT
 #ZEVW-ET31
 \$960.00



Dual View Workstation w/CPU

MOBILE
 #ZTMW-ET32
 \$1495.00



WALL MOUNT
 #ZEVW-ET32
 \$1120.00

Electronic equipment shown is not included.

FLIP-UP Wall Mount

#ZEVW-SS21 \$490.00

- All components can be easily relocated along the vertical support post.
- Wall Mount System includes:
 - 1-31.5" wall mount vertical track
 - 1-FLIP-UP Keyboard tray
 - 1-75mm/100mm VESA swivel mount
 - All components slide independently



Keyboard tray folds up and out of the way!



FLIP-UP Wall Mount w/CPU

#ZEVW-TS31 \$830.00

Same as above, but includes additional 31.5" track (for 63" total) and CPU holder.

wall mount kiosks

Mobile Workstation

#ZEMW-M250
\$680.

- Self-contained cart for desktop PC or laptop.
- Platform height adjustment: 28" to 41".
- Five-star base with two locking casters.
- Weight capacity: 20 lbs.



#ZEMW-M500
\$1050.00

- Same as ZEMW-250, but also includes:
- Monitor support.
 - CPU holder.



#ZEMW-M650
\$1140.00

- Same as ZEMW-500, but also includes:
- Keyboard tray.



Go-Anywhere Laptop Cart

Cat.# ZBLM-MC
\$395.00



- LAPTOP CART (gas spring height adjustment):**
- Portable stand with ample room for a keyboard or laptop.
 - Easily moves where you need to work.
 - Footring controls a pneumatic gas spring that raises the top from 20" to 30".
 - Includes angled laptop shelf and two removable mousepad/cupholders.
 - Top is light gray with black vinyl wrist rest.
 - Frame is black powder coated steel.
 - Ships UPS/FedEx @ 38#.

Pop-Up Laptop Cart

Cat.# ZBLM-PB
(black)
\$250.00

Cat.# ZBLM-PM
(mahogany)
\$250.00



- LAPTOP CART (gas spring height adjustment):**
- Portable stand with ample room for a keyboard or laptop.
 - Easily moves where you need to work.
 - Hand lever controls a pneumatic gas spring that raises the top from 21 1/4" to 31 1/4".
 - Top is available in black or mahogany laminate.
 - 5-star base with easy rolling 2" casters.
 - Ships UPS/FedEx @ 23#.

Tilt-Top Laptop Cart

#ZBLM-100
\$140.00

- Keep your laptop handy wherever you are.
- Variable height stand adjusts from 28" to 40".
- Black powder coat steel frame.
- Includes casters (two locking).
- Ships @ 20#.



Height and Tilt Adjustments for BOTH Tilt-Tip Carts
Tray: 18" w x 14" d
Angle: 45° to -45°

Universal Stool

#ZBCH-USB (Black ONLY)
\$299.00



- Self-skinned urethane seat and back.
- Height adjustable footring.
- Seat height: 22"-32"
- Overall ht: 37"-47"
- 7-year limited warranty.
- Ships @ 37#.

Hover Sit-to-Stand

#ZOWS-15 (Black ONLY)
\$260.00



- Sit-while-standing helps ease lower back stress.
- Seat tilts forward 20°.
- Seat height: 22"-32"
- Overall ht: 28.5"w x 38.5"h.
- 7-year limited warranty.
- Ships @ 33#.



Sit-to-Stand Height Adjustable Desks and Ergonomic Accessories

The blueprint to comfort and efficiency begins with a design that fits your needs. Techno-Aide's **FUSION-Ergo** line of ergonomic furniture solutions features:

- height adjustable desks
- broad range of standard configurations
- customized work surfaces
- design services to optimize your space.

For all of our desks, monitor supports, and ergonomic furniture go to:

www.fusionergo.com

